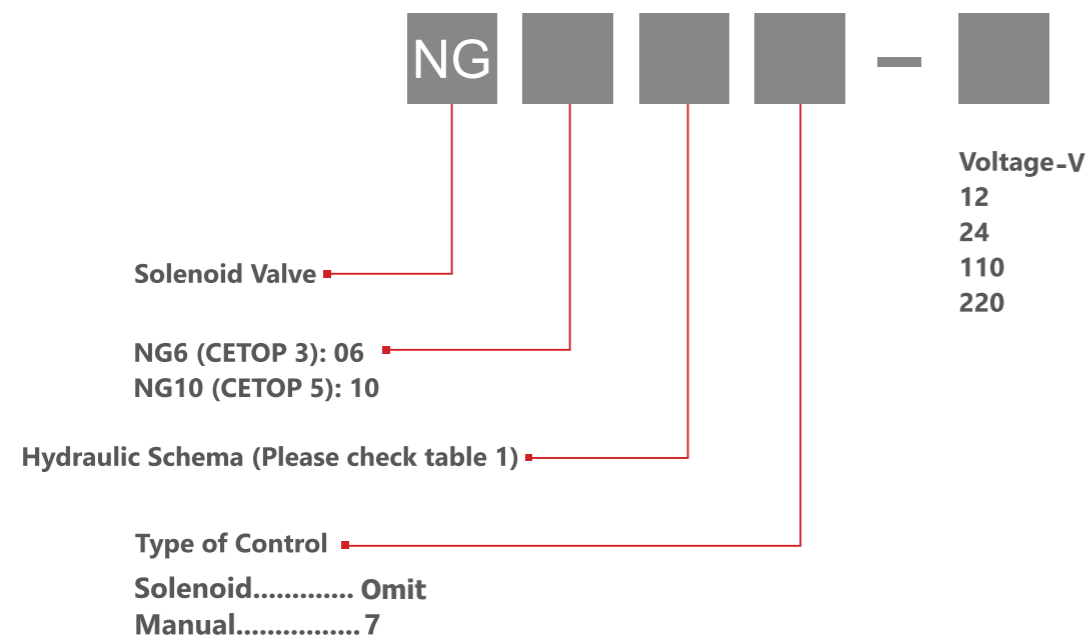


### ORDER CODES



**Order example: NG06 10-24**

Valves are supplied with DIN43650 connectors.  
Please contact us for other options.

### HYDRAULIC SCHEMES (Table 1)

Code	Symbol	Code	Symbol	Code	Symbol
00		16		39	
01		17		40	
02		18		41	
04		20*		42	
05		21		45	
06		24		61	
08		26		62	
10		27		64	
11		28		68	
12		32		70	
13		33		83	
14		36		20* - with detent	

### NG6 SOLENOID VALVES

Power Pack Code	Model	Voltage Options V	Description	Max. Flow liter/min	Max. Pressure bar
101.12/24/110/220	NG06 10	12/24/110/220	Single coil, open center	60	315
011.12/24/110/220	NG06 01	12/24/110/220	Closed center	60	315
021.12/24/110/220	NG06 02	12/24/110/220	Tandem center (P-T connected in neutral)	60	315
041.12/24/110/220	NG06 04	12/24/110/220	Motor spool (A-B-T connected in neutral)	60	315
001.12/24/110/220	NG06 00	12/24/110/220	Open center (H center)	60	315



### NG10 SOLENOID VALVES

Model	Voltage Options V	Description	Max. Flow liter/min	Max. Pressure bar
NG10 10	12/24/110/220	Single coil, open center	100	315
NG10 01	12/24/110/220	Closed center	100	315
NG10 02	12/24/110/220	Tandem center (P-T connected in neutral)	100	315
NG10 04	12/24/110/220	Motor spool (A-B-T connected in neutral)	100	315
NG10 00	12/24/110/220	Open center (H center)	100	315



### MANUAL CONTROL VALVE

Power Pack Code	Model	Description	Max. Flow liter/min	Max. Pressure bar
027	<b>NG06 02-7</b>	Tandem center (P-T connected in neutral)	60	315
	<b>NG10 02-7</b>	Tandem center (P-T connected in neutral)	100	315
017	<b>NG06 01-7</b>	Closed center	60	315
047	<b>NG06 04-7</b>	Motor spool (A-B-T connected in neutral)	60	315
	<b>NG10 04-7</b>	Motor spool (A-B-T connected in neutral)	100	315

Other spool options are available, please contact us.



## NG6 SOLENOID VALVE BLOCKS

Code Number	Model	Max. Flow liter/min	Max. Pressure bar
HP-NG6-1	Parallel, without relief	40	250
HP-NG6-2	Parallel, without relief	40	250
HP-NG6-3	Parallel, without relief	40	250
HP-NG6-4	Parallel, without relief	40	250
HP-NG6-5	Parallel, without relief	40	250
HP-NG6-6	Parallel, without relief	40	250
HP-NG6-7	Parallel, without relief	40	250
HP-NG6-8	Parallel, without relief	40	250



## NG6 SOLENOID VALVE BLOCKS

Code Number	Model	Max. Flow liter/min	Max. Pressure bar
HP-NG6-2-S	Series, without relief	40	250
HP-NG6-3-S	Series, without relief	40	250
HP-NG6-4-S	Series, without relief	40	250
HP-NG6-5-S	Series, without relief	40	250
HP-NG6-6-S	Series, without relief	40	250
HP-NG6-7-S	Series, without relief	40	250
HP-NG6-8-S	Series, without relief	40	250



## NG6 SOLENOID VALVE BLOCKS WITH RELIEF VALVES

Code Number	Model	Max. Flow liter/min	Max. Pressure bar
HP-NG6-1-RV	Parallel, with relief	40	250
HP-NG6-2-RV	Parallel, with relief	40	250
HP-NG6-3-RV	Parallel, with relief	40	250
HP-NG6-4-RV	Parallel, with relief	40	250
HP-NG6-5-RV	Parallel, with relief	40	250
HP-NG6-6-RV	Parallel, with relief	40	250
HP-NG6-7-RV	Parallel, with relief	40	250
HP-NG6-8-RV	Parallel, with relief	40	250



Hydraulic blocks are parallel type, working ports (A & B) are on side. Please contact us for special requests

## NG6 SOLENOID VALVE BLOCKS WITH RELIEF VALVES

Code Number	Model	Max. Flow liter/min	Max. Pressure bar
HP-NG6-2-RV-S	Series, with relief	40	250
HP-NG6-3-RV-S	Series, with relief	40	250
HP-NG6-4-RV-S	Series, with relief	40	250
HP-NG6-5-RV-S	Series, with relief	40	250
HP-NG6-6-RV-S	Series, with relief	40	250
HP-NG6-7-RV-S	Series, with relief	40	250
HP-NG6-8-RV-S	Series, with relief	40	250



## NG10 SOLENOID VALVE BLOCKS

Code Number	Model	Max. Flow liter/min	Max. Pressure bar
HP-NG10-1	Parallel, without relief	80	250
HP-NG10-2	Parallel, without relief	80	250
HP-NG10-3	Parallel, without relief	80	250
HP-NG10-4	Parallel, without relief	80	250
HP-NG10-5	Parallel, without relief	80	250
HP-NG10-6	Parallel, without relief	80	250



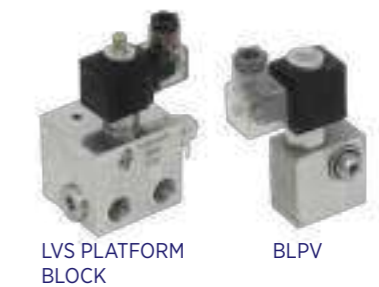
## NG10 SOLENOID VALVE BLOCKS WITH RELIEF VALVES

Code Number	Model	Max. Flow liter/min	Max. Pressure bar
HP-NG610-1-RV	Parallel, with relief	80	250
HP-NG10-2-RV	Parallel, with relief	80	250
HP-NG10-3-RV	Parallel, with relief	80	250
HP-NG10-4-RV	Parallel, with relief	80	250
HP-NG10-5-RV	Parallel, with relief	80	250

## SPECIAL BLOCKS

Code Number	Model	Max. Flow liter/min	Max. Pressure bar
LVS-C-MO-...-3/8	Normally closed 3/8"	15	200
BLPV-C-MO-...-3/8	Normally closed 3/8"	15	200
BLPV-C-MO-...-3/8-B*	Normally closed 3/8"	15	200

\*With banjo connection



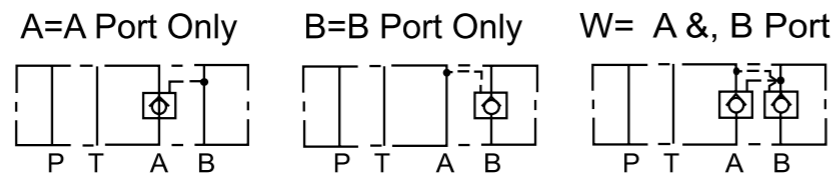
LVS PLATFORM BLOCK

BLPV

## MODULAR PILOT OPERATED CHECK VALVES



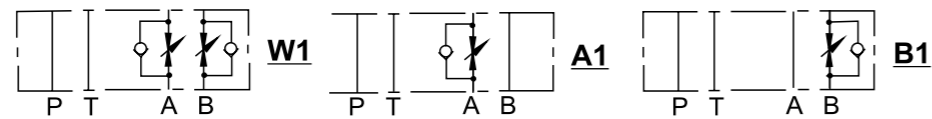
Code Number	Mounting surface	Max. Flow liter/min	Max. Pressure bar	Function
MPC-02A-50-50-A	NG6 (CETOP 3)	60	315	A port
MPC-02B-50-50-B	NG6 (CETOP 3)	60	315	B port
MPC-02-W50-50-D	NG6 (CETOP 3)	60	315	A & B ports
MPC-03A-50-50-A	NG10 (CETOP 5)	100	315	A port
MPC-03B-50-50-B	NG10 (CETOP 5)	100	315	B port
MPC-03-W50-50	NG10 (CETOP 5)	100	315	A & B ports



## MODULAR FLOW CONTROL VALVES



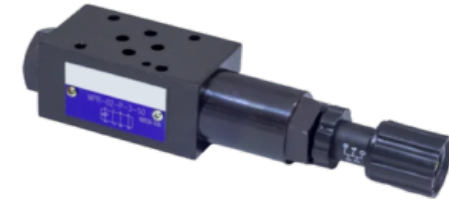
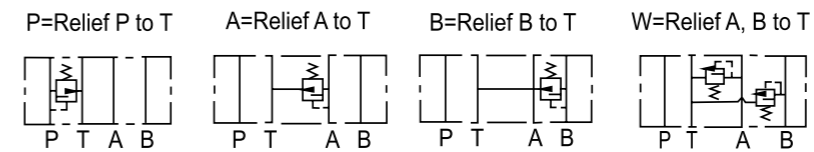
Code Number	Mounting surface	Max. Flow liter/min	Max. Pressure bar	Function
MTC-02-A-50-A	NG6 (CETOP 3)	30	315	A port
MTC-02-B-50-B	NG6 (CETOP 3)	30	315	B port
MTC-02-W-50-D	NG6 (CETOP 3)	30	315	A & B ports
MTC-03-A-50-A	NG10 (CETOP 5)	50	315	A port
MTC-03-B-50-B	NG10 (CETOP 5)	50	315	B port
MTC-03-W-50-D	NG10 (CETOP 5)	50	315	A & B ports



## MODULAR PRESSURE RELIEF VALVES

Code Number	Mounting surface	Max. Flow liter/min	Max. Pressure bar	Function
MR-02A-3-50-A-L	NG6 (CETOP 3)	35	315	A port
MR-02B-3-50-B-L	NG6 (CETOP 3)	35	315	B port
MR-02P-3-50-P-L	NG6 (CETOP 3)	35	315	P port
MR-02W-3-50-AB	NG6 (CETOP 3)	35	315	A & B ports
MR-03A-3-50-A-L	NG10 (CETOP 5)	70	315	A port
MR-03B-3-50-B-L	NG10 (CETOP 5)	70	315	B port
MR-03P-3-50	NG10 (CETOP 5)	70	315	P port
MR-03W-3-50-AB	NG10 (CETOP 5)	70	315	A & B ports

Pressure setting range is 30-315 bar. Please contact us for different pressure setting ranges.



## MODULAR PRESSURE REDUCING VALVES

Code Number	Mounting surface	Max. Flow liter/min	Max. Pressure bar	Function
MPR-02A-3A-50-A	NG6 (CETOP 3)	35	210	A port
MPR-02B-3A-50-B	NG6 (CETOP 3)	35	210	B port
MPR-02P-3-50P-L	NG6 (CETOP 3)	35	210	P port
MPR-03A-3A-50-A	NG10 (CETOP 5)	70	210	A port
MPR-03B-3A-50-B	NG10 (CETOP 5)	70	210	B port
MPR-03-P-3-50	NG10 (CETOP 5)	70	210	P port

Pressure setting is up to 210 bar. Please contact us for different pressure setting ranges.

