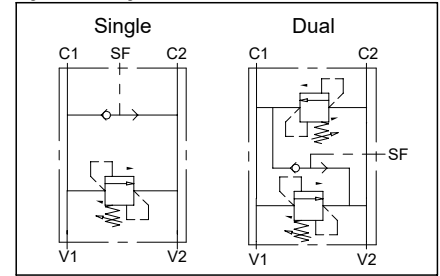


**Single / Dual cross over direct acting relief valve OMS motor flangeable**  
**Valvola antiurto singola / doppia flangiabile su motori OMS**

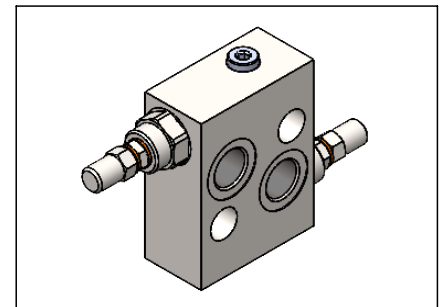
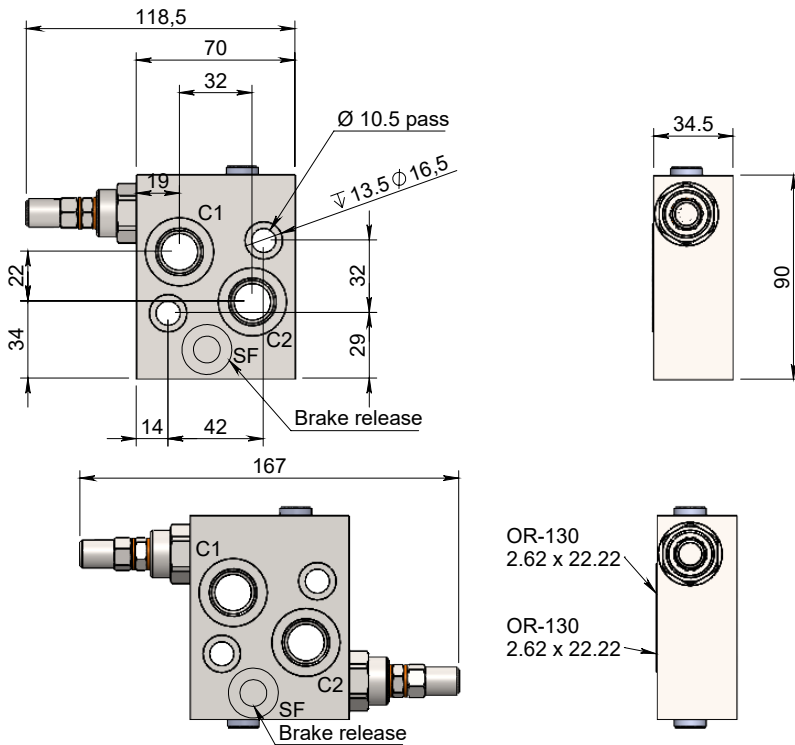
**Specifications / Specifiche**

Fluid viscosity:	Viscosità Fluido :	ISO 3448
Filtration:	Classe di contaminazione:	ISO 4406
Fluid temperature:	Temperatura fluido:	-20°C +90°C
Ambient temperature:	Temperatura ambiente:	-20°C +50°C
Max. operating pressure:	Pressione di lavoro max :	350 Bar
Standard seals:	Guarnizioni standard:	NBR 70 Shore A
Manifold material:	Materiale collettore:	Zinc plated steel

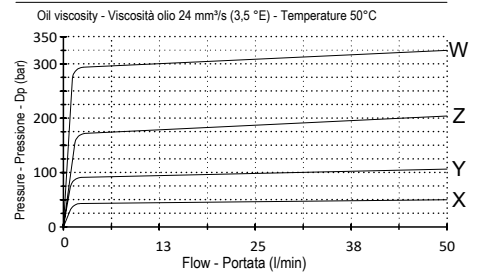
**Hydraulic symbol / Simbolo idraulico**



**Dimensions / Dimensioni (mm)**



**Performance / Prestazioni**



**How to order / Come ordinare**

**10-L-04-G\*\*-3-R-04\*-N1**

04= Double effect	Manifold model Modello collettore	Seals material <b>N1= NBR (Std)</b>
14= Double effect with brake release		Materiale guarnizioni <b>V1 = Viton</b>
05= Single effect		Std setting at 5 l/min
15= Single effect with brake release	Adjustment Regolazione	Setting range <b>X = 10-50 bar</b> 30 bar
R= Screw with steel cap (Std)	Ports size Dimensione attacchi	<b>Z = 10-180 bar (Std)</b> 90 bar
N= Tamper resistant cap		<b>W = 80-300 bar</b> 150 bar
O= Handknob and locknut		
04 = 1/2 BSPP		

Standard code Codice standard	Thread/Filetto		Denomination	Weight/Peso (kg)	Max. Flow Q max (l/min)
	C1-C2	SF			
10L04G043R04ZN1	1/2	-	RVD-OMS-2	1.5	50
10L04G143R04ZN1	1/2	1/4	RVD-OMS-2-SF	1.5	50
10L04G053R04ZN1	1/2	-	RVD-OMS-1	1.5	50
10L04G153R04ZN1	1/2	1/4	RVD-OMS-1-SF	1.5	50

\*On request versions: Please, contact our customer service.

\*Versioni su richiesta: Per cortesia contattare il ns. servizio clienti.