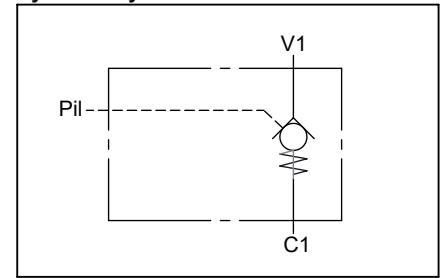
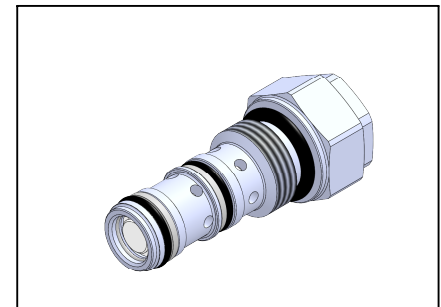
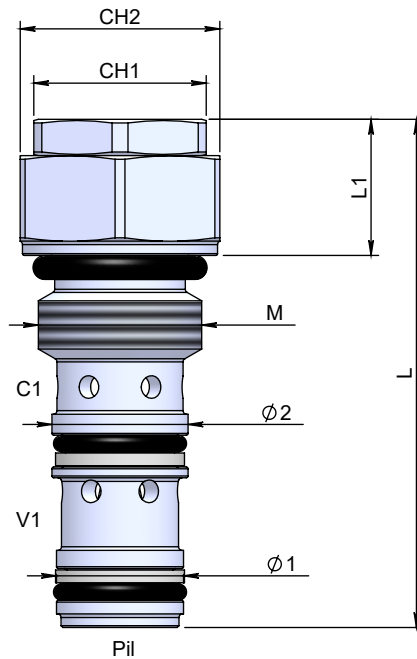
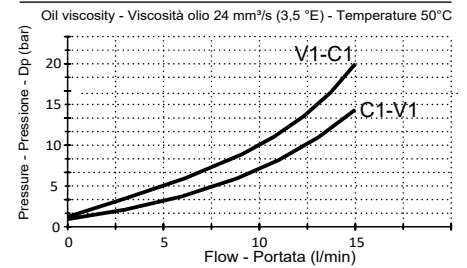


**Cartridge single pilot operated check valve  
Valvola di blocco pilotata semplice effetto a cartuccia**

**Specifications / Specifiche**

Fluid viscosity:	Viscosità fluido :	ISO 3448
Filtration:	Classe di contaminazione:	ISO 4406
Fluid temperature:	Temperatura fluido:	-20°C +90°C
Ambient temperature:	Temperatura ambiente:	-20°C +50°C
External surfaces:	Superfici esterne:	Zinc plated/Zincate
Standard seals:	Guarnizioni standard:	NBR 70 Shore A
Cavity code:	Codice cavità:	DO-590.005.23

**Hydraulic symbol / Simbolo idraulico**

**Dimensions / Dimensioni (mm)**

**Performance / Prestazioni**

**How to order / Come ordinare**
**14-E-15-B01-3-\*--23-T**

M = With OR Std.  OR on pilot piston  
 N = Without OR  OR su pistone pilota

Standard code Codice standard	CH1	CH2	L	L1	Ø1	Ø2	M	Tightening torque (Nm) Coppia serraggio (Nm)	Cr. Pressure (bar) Press. apertura (bar)	Weight/Peso (kg)	Max. Flow Q max (l/min)	Max Pressure Pressione Max	Pilot ratio Rapp. pil.
14E15B013M23T	19	22	56	15	14	15	M18x1.5	35-40	5	0.09	15	350	3.2 : 1