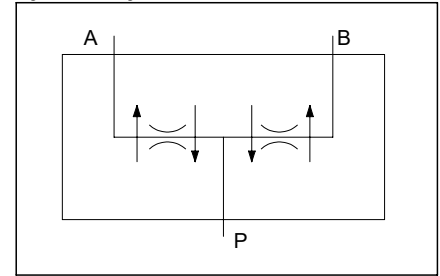


**Flow divider
Valvola equilibratrice di flusso**

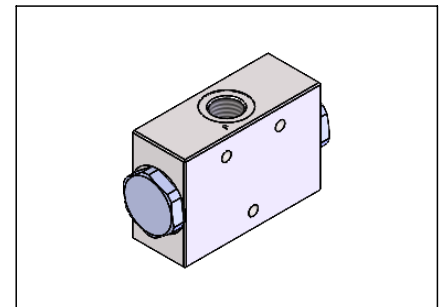
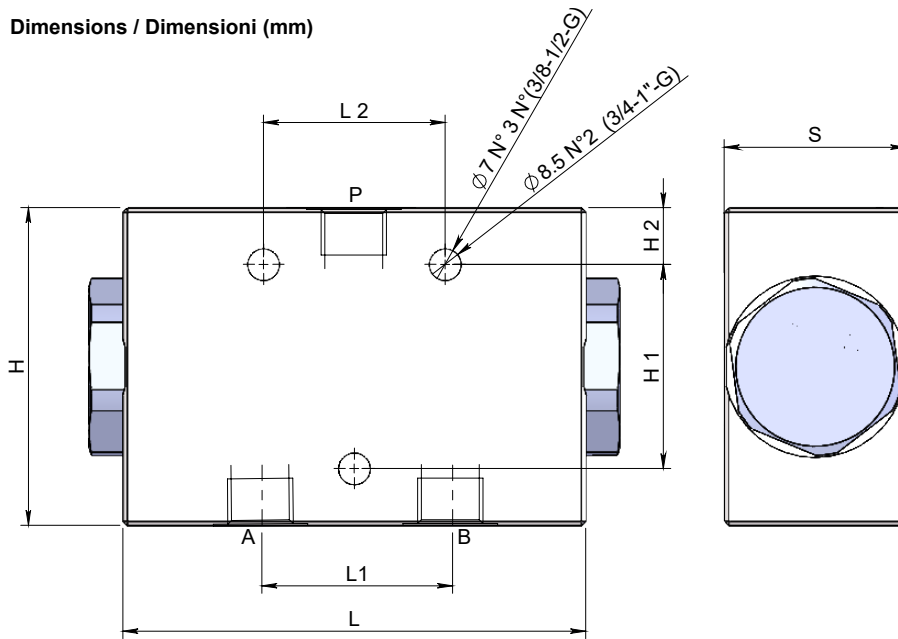
Specifications / Specifiche

Fluid viscosity:	Viscosità Fluido :	10-550mm ² /s
Filtration:	Classe di contaminazione:	ISO code 16/13
Fluid temperature:	Temperatura fluido:	-20°C +90°C
Ambient temperature:	Temperatura ambiente:	-20°C +50°C
Rated flow:	Portata:	1-150 l/min
Max. operating pressure:	Pressione di lavoro max :	300 Bar
External surfaces:	Superfici esterne:	Zinc plated/Zincate
Standard seals:	Guarnizioni standard:	NBR 70 Shore A

Hydraulic symbol / Simbolo idraulico



Dimensions / Dimensioni (mm)



How to order / Come ordinare

23*-04- * -3-F-02-X

- A=1-3
- B=3-6
- C=6-10
- D=10-20
- E=20-32
- F=25-40
- G=40-60
- H=60-80
- I=80-100
- L=100-120
- M=120-150

Flow (l/min)
Portata(l/min)

%Division
Divisione% [X = 50-50

Body material
Materiale corpo [3=Zinc plated steel/Acciaio zincato

Threads
Filetti [L01=P3/8",A-B3/8"
L02=P1/2",A-B3/8"
L03=P3/4",A-B1/2"
L04=P1",A-B3/4"

Code/Codice	Flow/Portata	P	A-B	H	H1	H2	L	L1	L2	S	Weight/Peso (kg)
23*-04-L01-3-F-02-X	1-32	3/8"	3/8"	70	45	12.5	117	53	40	40	2
23*-04-L02-3-F-02-X	25-80	1/2"	3/8"	70	45	12.5	117	53	40	40	2
23*-04-L03-3-F-02-X	80-100	3/4"	1/2"	80	/	10	179	76	140	50	4.5
23*-04-L04-3-F-02-X	100-150	1"	3/4"	80	/	10	179	76	140	50	4.5

*On request versions: Please, contact our customer service.

*Versioni su richiesta: Per cortesia contattare il ns. servizio clienti.