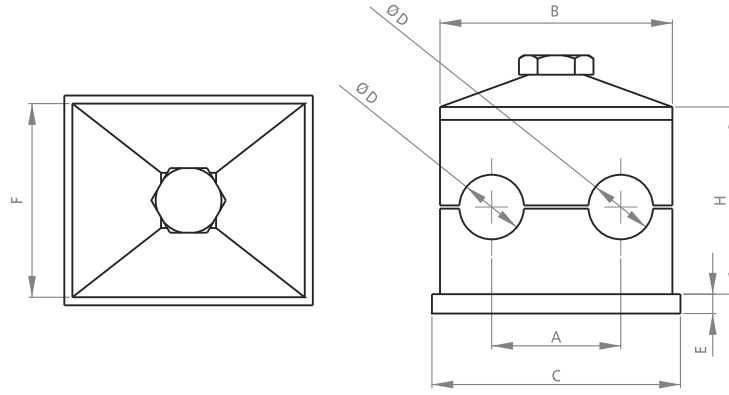
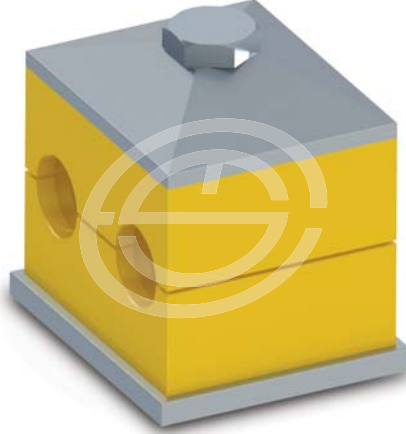


# BORU KELEPÇESİ İKİZ

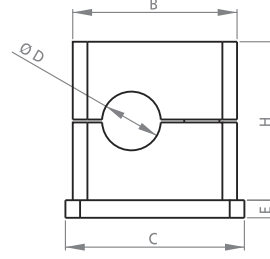
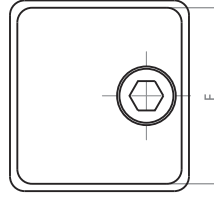
# HYDRAULIC PIPE CLAMP DUAL



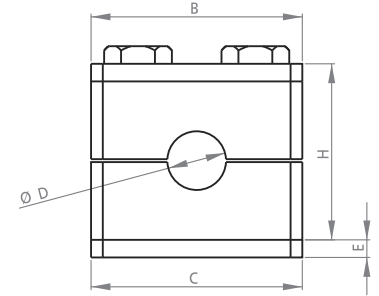
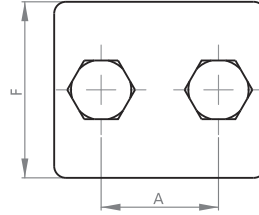
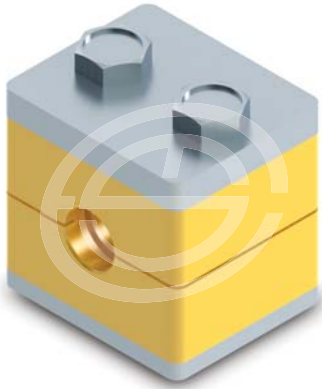
KOD CODE	GRUP NO GROUP NO	A	B	C	D	E	F	H
HBK 6 IC	1	20	36	37	6	3	30	27
HBK 8 IC	1	20	36	37	8	3	30	27
HBK 10 IC	1	20	36	37	10	3	30	27
HBK 12 IC	1	20	36	37	12	3	30	27
HBK 14 IC	2	29	53	55	14	5	30	26
HBK 15 IC	2	29	53	55	15	5	30	26
HBK 16 IC	2	29	53	55	16	5	30	26
HBK 18 IC	2	29	53	55	18	5	30	26
HBK 20 IC	3	36	67	70	20	5	30	37
HBK 22 IC	3	36	67	70	22	5	30	37
HBK 25 IC	3	36	67	70	25	5	30	37
HBK 28 IC	4	45	82	85	28	5	30	41
HBK 30 IC	4	45	82	85	30	5	30	41
HBK 35 IC	5	56	106	110	35	5	30	54

# BORU KELEPÇESİ TEKLİ

# HYDRAULIC PIPE CLAMP ODD



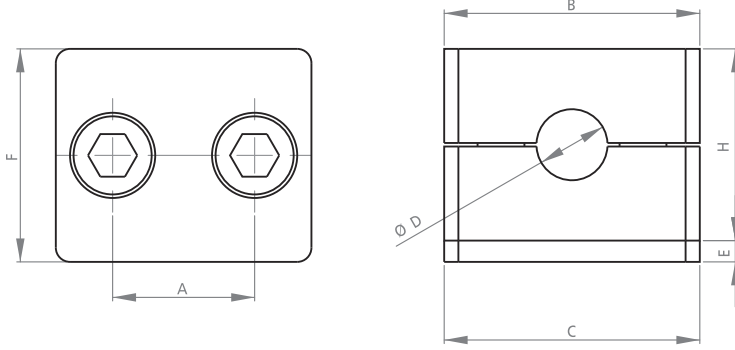
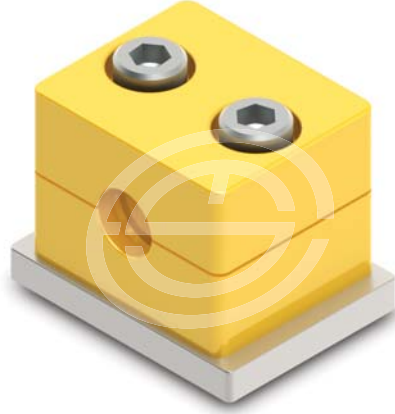
KOD CODE	GRUP NO GROUP NO	B	C	D	E	F	H
HBK 6 TT	0	28	31,5	6	3	30	27
HBK 8 TT	0	28	31,5	8	3	30	27
HBK 10 TT	0	28	31,5	10	3	30	27
HBK 12 TT	0	28	31,5	12	3	30	27



KOD CODE	GRUP NO GROUP NO	A	B	C	D	E	F	H
HBK 6 CC	1	20	37	36	6	3	30	27
HBK 8 CC	1	20	37	36	8	3	30	27
HBK 10 CC	1	20	37	36	10	3	30	27
HBK 12 CC	1	20	37	36	12	3	30	27
HBL 14 CC	2	26	42	42	14	3	30	33
HBK 15 CC	2	26	42	42	15	3	30	33
HBK 16 CC	2	26	42	42	16	3	30	33
HBK 18 CC	2	26	42	42	18	3	30	33
HBK 20 CC	3	33	50	50	20	3	30	35
HBK 22 CC	3	33	50	50	22	3	30	35
HBK 25 CC	3	33	50	50	25	3	30	35
HBK 28 CC	4	40	59	59	28	3	30	42
HBK 30 CC	4	40	59	59	30	3	30	42
HBK 35 CC	5	52	71	71	35	3	30	58
HBK 38 CC	5	52	71	71	38	3	30	58
HBK 42 CC	5	52	71	71	42	3	30	58
HBK 50 CC	6	66	86	88	50,8	3	30	66

# BORU KELEPÇESİ TEKLİ

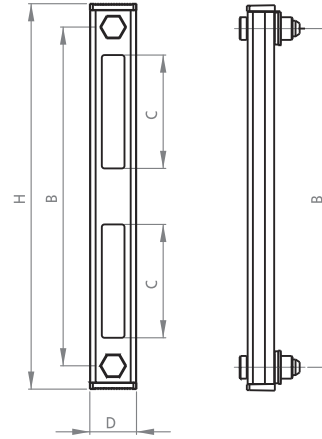
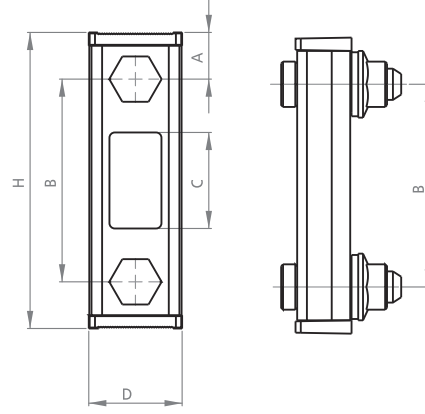
# HYDRAULIC PIPE CLAMP ODD



KOD CODE	GRUP NO GROUP NO	A	B	C	D	E	F	H
HBK 6 CT	1	20	37	36	6	3	30	27
HBK 8 CT	1	20	37	36	8	3	30	27
HBK 10 CT	1	20	37	36	10	3	30	27
HBK 12 CT	1	20	37	36	12	3	30	27
HBK13 CT	2	26	42	42	13,5	3	30	33
HBK 14 CT	2	26	42	42	14	3	30	33
HBK15 CT	2	26	42	42	15	3	30	33
HBK 16 CT	2	26	42	42	16	3	30	33
HBK 17 CT	2	26	42	42	17,2	3	30	33
HBK 18 CT	2	26	42	42	18	3	30	33
HBK 20 CT	3	33	50	50	20	3	30	35
HBK 21 CT	3	33	50	50	21,3	3	30	35
HBK 22 CT	3	33	50	50	22	3	30	35
HBK 25 CT	3	33	50	50	25	3	30	35
HBK 26 CT	4	40	59	60	26,9	3	30	42
HBK 28 CT	4	40	59	60	28	3	30	42
HBK 30 CT	4	40	59	60	30	3	30	42
HBK 32 CT	5	52	71	71	32	3	30	58
HBK 33 CT	5	52	71	71	33,7	3	30	58
HBK 35 CT	5	52	71	71	35	3	30	58
HBK 38 CT	5	52	71	71	38	3	30	58
HBK 42 CT	5	52	71	71	42	3	30	58
HBK 44 CT	6	66	86	88	44,5	3	30	66
HBK 48 CT	6	66	86	88	48,3	3	30	66
HBK 50 CT	6	66	86	88	50,8	3	30	66

# SEVİYE GÖSTERGESİ

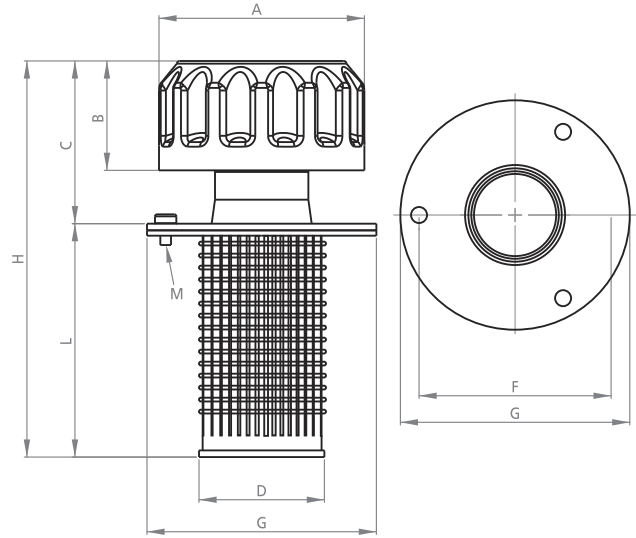
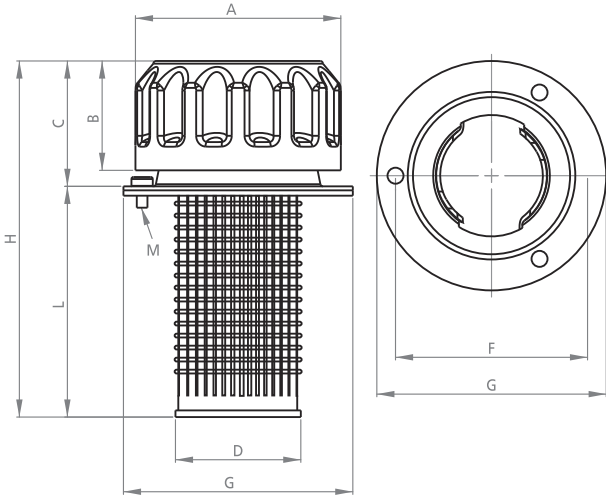
# LEVEL INDICATOR



KOD CODE	A	B	C	D	H	M
SG 76	17.5	76	35	35	111	M12
SGD 76	17.5	76	35	35	111	M12
SG 127	17.5	127	85	35	162	M12
SGD 127	17.5	127	85	35	162	M12
SG 254	17.5	254	85	35	289	M12
SGD 254	17.5	254	85	35	289	M12

# DEPO YAĞ DOLUM KAPAĞI

## TANK TAP

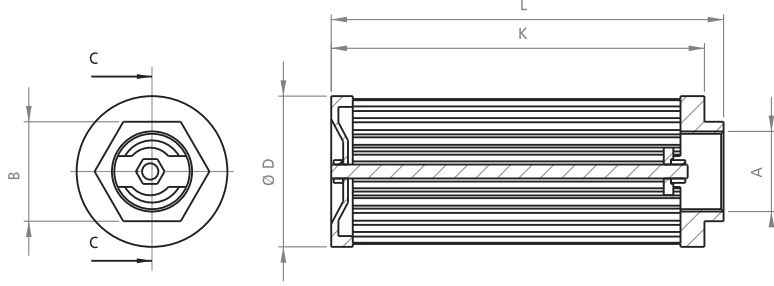


KOD CODE	A	B	C	D	F	G	H	L	M
DEPO KAPAĞI KÜÇÜK VİDALI SMALL TANK TAP SCREWED	46	37	51	29	46	52	118	67	M4
DEPO KAPAĞI BÜYÜK VİDALI BIG TANK TAP SCREWED	77	40	60	47	71	85	148	88	M5
DEPO KAPAĞI BÜYÜK KİLİTLİ BIG TANK TAP LOCKED	77	40	46	47	71	85	131	85	M5

Büyük depo kapağı boyalı ve kromajlı olarak üretilmektedir.  
Big tank is manufactured with painted cromium plated.

# EMİŞ FİLTRESİ

# SUCTION FILTER



KESİT(SECT.) G-C

EBAT (LT/MIN) SIZE	A	B	ØD	K	L
EF 5	1/4"	16	30	74	82
EF 15	1"	42	61	68	78
EF 25	1"	42	61	104	114
EF 45	1"	42	61	150	160
EF 65	1-1/2"	59	82	127	131
EF 90	1-1/2"	59	82	164	174
EF 125	1-1/2"	59	82	209	219
EF 180	1-1/2"	76	82	248	258
EF 225	2 2-1/2"	81	130	162	172
EF 300	2 2-1/2"	81	130	198	208
EF 500	2 2-1/2"	81	130	253	263
EF 750	3 - 4	106	180	247	263
EF 1400	3 - 4	106	180	496	512

## GENEL ÖZELLİKLER

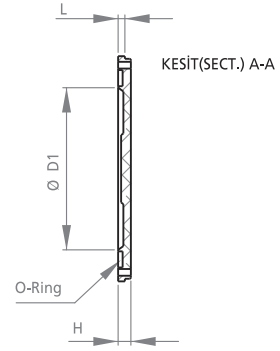
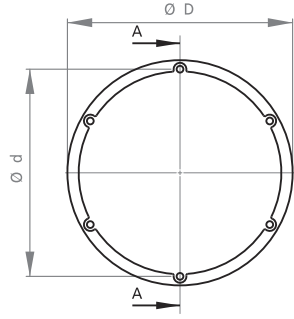
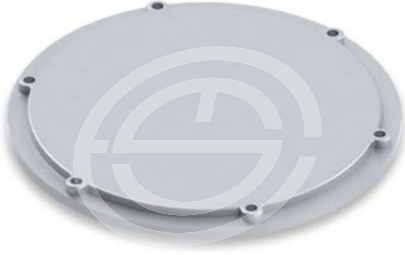
Gövde	Alüminyum Başlık, krom filtre malzemesi, sac metal kaplama M6 vida
Yapıştırıcı	Yapışkan Poliüretan
Çalışma Sıcaklığı	100 °C
Akışkan	Mineral Yağ
Akış Oranı	1400 lt/min
Filtrasyon Aralığı	125 g
Bağlantı ölçüsü	G1/4" - G1/2" - G1" - G1 - 1/2" - G2" - G3
İç Taraf	Galvanizli Sac

## GENERAL SPECIFICATIONS

Trunk	Aluminium cap, filtre material chromed, M6 screw
Splicer	Stick - on
Ambient temperature	100 °C
Fluid	Mineral oil
Flow rate	1400 lt/min
Filtration Interval	125 g
Mounting dimension	G1/4" - G1/2" - G1" - G1 - 1/2" - G2" - G3
Inside	Galvanized sheet

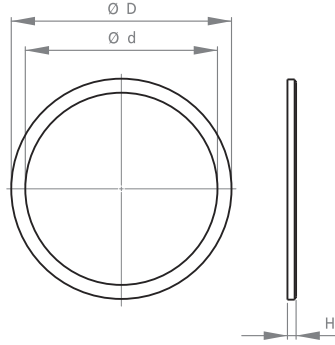
# BAKIM KAPAĞI

# OVERHAUL COVER



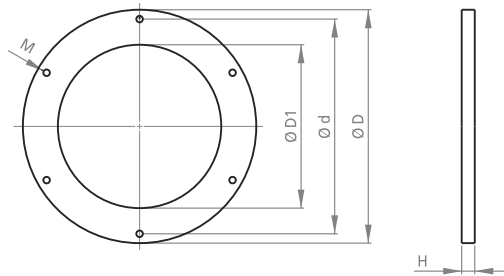
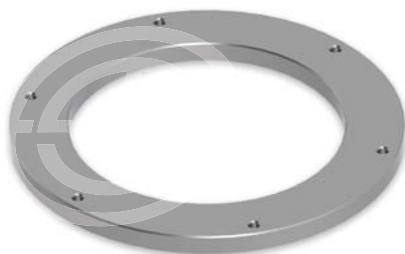
BAKIM KAPAĞI  
OVERHAUL COVER

KOD CODE	D	D1	d	H	L	M	DELİK SAYISI HOLE NUMBER	O-RİNG KANALI O-RING DUCT
EBK250	250	180	230	17	9.5	M8	6	216 x 186
EBK300	300	215	276	17	9.5	M8	6	263 x 220
EBK350	350	250	323	18	10	M10	4	300 x 260
EBK350-1	350	250	323	18	10	M10	8	300 x 260
EBK500	500	365	451	20	12	M12	6	428 x 380



BAKIM KAPAĞI LASTİĞİ  
OVERHAUL COVER O-RING

KOD CODE	D	d	H
EBKL250	215	187	13
EBKL300	260	222	15
EBKL300I	260	222	11
EBKL350	298	261	15
EBKL350I	298	261	11
EBKL500I	427	383	13
EBKL500	427	383	16



BAKIM KAPAĞI FLANŞI  
OVERHAUL COVER FLANGE

KOD CODE	D	D1	d	H	M	DELİK SAYISI HOLE NUMBER
EBKF250	250	175	230	12	M8	6
EBKF300	300	210	276	12	M8	6
EBKF350	350	250	323	16	M10	4
EBKF350-1	350	250	323	16	M10	8
EBKF500	500	373	451	16	M12	6