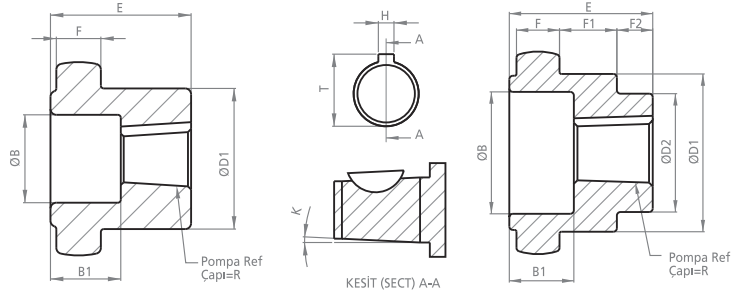


# DK24

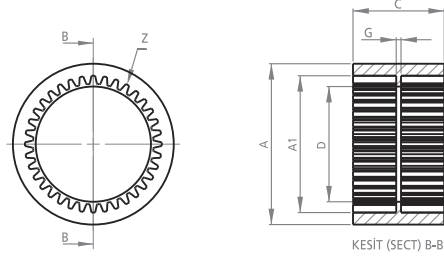
## KAPLİN

## COUPLING

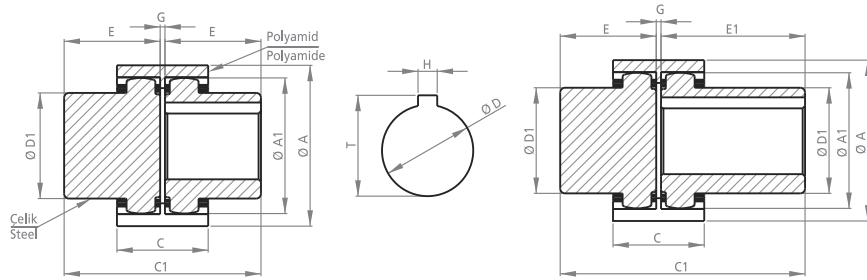


### POMPA MİLİNE GÖRE İŞLENMİŞ KAPLİNLER PROCESSED COUPLINGS PUMP SHAFT

KOD CODE	B	B1	D1	D2	E	F	F1	F2	H	K	R	T	Z
DK240PD03	-	-	36	-	28	9.5	-	-	3.20	-	13.45	15.05	27
DK240PK03	22	16	36	23	28	9.5	11.5	5	2.50	1/8	9.50	10.75	27
DK24-1P03	28	11	36	-	28	9.5	-	-	4.00	1/8	16.66	18.66	27
DK24-1P03T	28	11	36	-	28	9.5	-	-	3.20	1/8	16.66	18.26	27
DK24-SAE-A-03	-	-	36	-	28	9.5	-	-	5.00	-	19.05	21.55	27



KOD CODE	A	A1	C	D	G	Z
DK2402	53	44	37	38	5	27

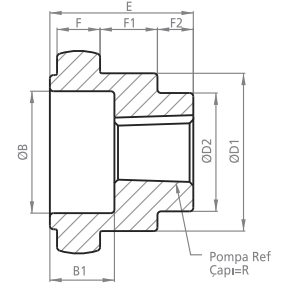
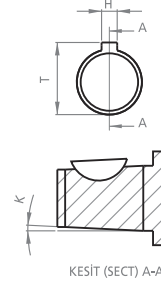
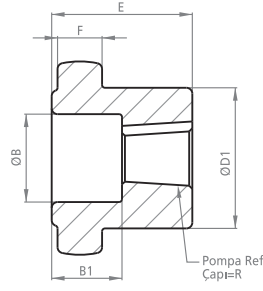


### MOTOR MİLİNE GÖRE İŞLENMİŞ KAPLİNLER PROCESSED COUPLINGS MOTOR SHAFT

KOD CODE	A	A1	C	C1	D	D1	E	E1	G	H	T	Z
DK2403	53	44.3	37	58	-	36	28	-	2	-	-	27
DK241103	53	44.3	37	58	11	36	28	-	2	4	13	27
DK241403	53	44.3	37	58	14	36	28	-	2	5	16.5	27
DK241903	53	44.3	37	58	19	36	28	-	2	6	22	27
DK242403	53	44.3	37	58	24	36	28	-	2	8	28	27
UDK2403	53	44.3	37	70	-	36	28	40	2	-	-	27
UDK241103	53	44.3	37	70	11	36	28	40	2	4	13	27
UDK241403	53	44.3	37	70	14	36	28	40	2	5	16.5	27
UDK241903	53	44.3	37	70	19	36	28	40	2	6	22	27
UDK242403	53	44.3	37	70	24	36	28	40	2	8	28	27

Motor Mil Çapları için sayfa 26'ya bakınız.  
Look at the paper 26 for Motor Shaft Diameters.

TOLERANSLAR MİL ÖLÇÜLERİNDE: -0 +0.05, DİĞER ÖLÇÜLERDE: ±0.15  
TOLERANCES SHAFT DIMENSIONS: -0 +0.05, OTHER DIMENSIONS: ±0.15  
Tasarım Tescil No Design Registration Certificate Number: 2001 01950

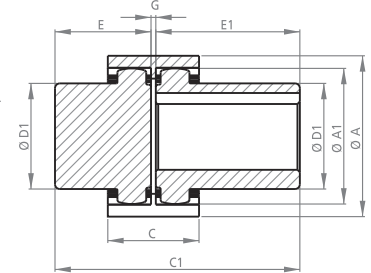
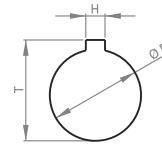
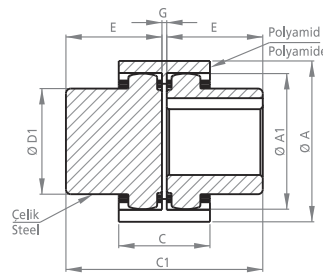
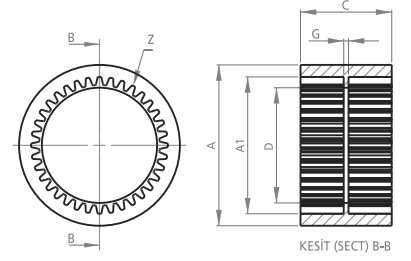


POMPA MİLİNE GÖRE İŞLENMİŞ KAPLINLER  
PROCESSED COUPLINGS PUMP SHAFT

KOD CODE	B	B1	D1	D2	E	F	F1	F2	H	K	R	T	Z
DK280PD03	-	-	43.70	-	40	12	-	-	3.20	-	13.45	15.05	36
DK28-G2B-03	-	-	43.70	-	40	12	-	-	3.00	-	12.50	14.00	36
DK280PK03	22	28	43.70	31	40	12	15	11	2.50	1/8	9.50	10.75	36
DK2811303	34	18	43.70	29	40	12	16	10	3.20	1/5	17.00	18.60	36
DK2811703	34	18	43.70	30	40	12	16	10	3.20	1/8	15.00	16.60	36
DK28-1P-03	34	18	43.70	33	40	12	16	10	4.00	1/8	16.66	18.66	36
DK28-1P-03T	34	18	43.70	33	40	12	16	10	3.20	1/8	16.66	18.26	36
DK282PK03	34	13	43.70	-	40	12	-	-	4.00	1/8	21.59	23.60	36
DK282PD03	-	-	43.70	-	40	12	-	-	6.35	-	22.15	25.35	36
DK28-SAE-A-03	-	-	43.70	-	40	12	-	-	5.00	-	19.05	21.55	36



KOD CODE	A	A1	C	D	G	Z
DK2802	67	57	38	47	5	36



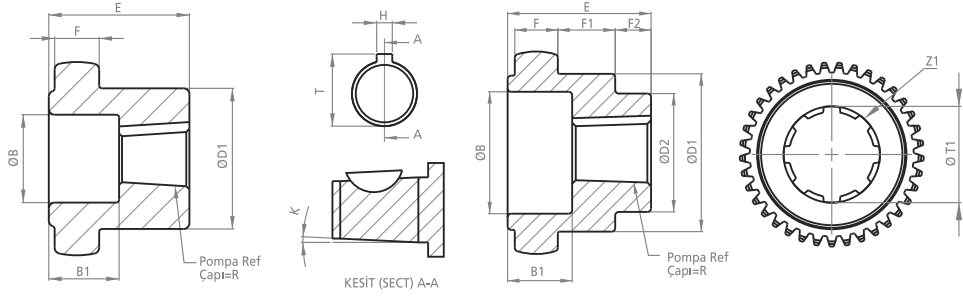
MOTOR MİLİNE GÖRE İŞLENMİŞ KAPLINLER  
PROCESSED COUPLINGS MOTOR SHAFT

KOD CODE	A	A1	C	C1	D	D1	E	E1	G	H	T	Z
DK2803	67	56.5	40	82	-	43.7	40	-	2	-	-	36
DK281103	67	56.5	40	82	11	43.7	40	-	2	4	13	36
DK281403	67	56.5	40	82	14	43.7	40	-	2	5	16.5	36
DK281903	67	56.5	40	82	19	43.7	40	-	2	6	22	36
DK282403	67	56.5	40	82	24	43.7	40	-	2	8	28	36
DK282503	67	56.5	40	82	25	43.7	40	-	2	8	29	36
DK282803	67	56.5	40	82	28	43.7	40	-	2	8	32	36
UDK2803	67	56.5	40	102	-	43.7	40	60	2	-	-	36
UDK281903	67	56.5	40	102	19	43.7	40	60	2	6	22	36
UDK282403	67	56.5	40	102	24	43.7	40	60	2	8	28	36
UDK282503	67	56.5	40	102	25	43.7	40	60	2	8	29	36
UDK282803	67	56.5	40	102	28	43.7	40	60	2	8	32	36

Motor Mil Çapları için sayfa 26'ya bakınız.  
Look at the paper 26 for Motor Shaft Diameters.

TOLERANSLAR MİL ÖLÇÜLERİNDE: -0 +0.05, DİĞER ÖLÇÜLERDE: ±0.15  
TOLERANCES SHAFT DIMENSIONS: -0 +0.05, OTHER DIMENSIONS: ±0.15

Tasarım Tescil No Design Registration Certificate Number: 2001 01950

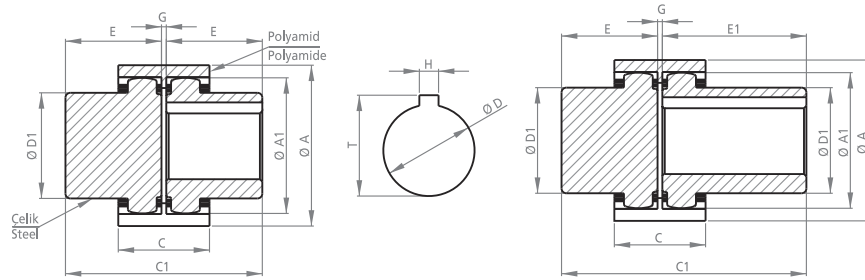
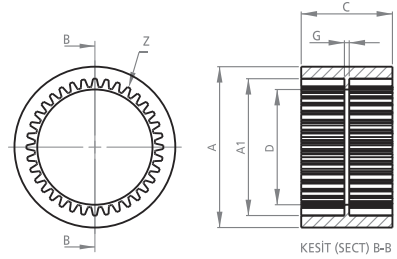


### POMPA MİLİNE GÖRE İŞLENMİŞ KAPLİNLER PROCESSED COUPLINGS PUMP SHAFT

KOD CODE	B	B1	D1	D2	E	F	F1	F2	H	K	R	T	T1	Z	Z1
DK3211703	34	18	50	33	40	12.40	15.5	10	3.20	1/8	15.00	16.60	-	38	-
DK321PK03	34	18	50	33	40	12.40	15.5	10	4.00	1/8	16.66	18.66	-	38	-
DK321PK03 T	34	18	50	33	40	12.40	15.5	10	3.20	1/8	16.66	18.26	-	38	-
DK322PK03	34	13	50	33	40	12.40	-	-	4.00	1/8	21.59	23.60	-	38	-
DK322PD03	-	-	50	-	40	12.40	-	-	6.35	-	22.15	25.35	-	38	-
DK32-SAE-A-03	-	-	50	-	40	12.40	-	-	5.00	-	19.05	21.55	-	38	-
DK3213F-03	-	-	50	-	40	12.40	-	-	-	-	-	-	21.80	38	13
DK3213F-1-03	-	-	50	-	40	12.40	-	-	-	-	-	-	22.20	38	13
DK3215F-03	-	-	50	-	40	12.40	-	-	-	-	-	-	25.20	38	15
DK3214F-1-03	-	-	50	-	40	12.40	-	-	-	-	-	-	29.85	38	14
DK3214F-2-03	-	-	50	-	40	12.40	-	-	-	-	-	-	30.00	38	14
DK3214F-3-03	-	-	50	-	40	12.40	-	-	-	-	-	-	31.70	38	14
DK3214F-4-03	-	-	50	-	40	12.40	-	-	-	-	-	-	27.25	38	14



KOD CODE	A	A1	C	D	G	Z
DK3202	76	60	43	54	6	38

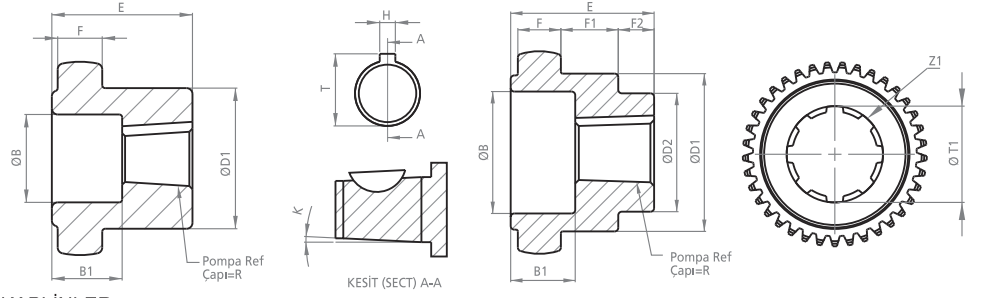


### MOTOR MİLİNE GÖRE İŞLENMİŞ KAPLİNLER PROCESSED COUPLINGS MOTOR SHAFT

KOD CODE	A	A1	C	C1	D	D1	E	E1	G	H	T	Z
DK3203	76	59.3	43	83	-	50	40	-	3	-	-	38
DK321903	76	59.3	43	83	19	50	40	-	3	6	22	38
DK322403	76	59.3	43	83	24	50	40	-	3	8	28	38
DK322803	76	59.3	43	83	28	50	40	-	3	8	32	38
DK323203	76	59.3	43	83	32	50	40	-	3	8	36	38
UDK3203	76	59.3	43	103	-	50	40	60	3	-	-	38
UDK321903	76	59.3	43	103	19	50	40	60	3	6	22	38
UDK322403	76	59.3	43	103	24	50	40	60	3	8	28	38
UDK322803	76	59.3	43	103	28	50	40	60	3	8	32	38
UDK323203	76	59.3	43	103	32	50	40	60	3	8	36	38

Motor Mil Çapları için  
sayfa 26'ya bakınız.  
Look at the paper 26 for  
Motor Shaft Diameters.

TOLERANSLAR MİL ÖLÇÜLERİNDE: -0 +0.05, DİĞER ÖLÇÜLERDE: ±0.15  
TOLERANCES SHAFT DIMENSIONS: -0 +0.05, OTHER DIMENSIONS: ±0.15

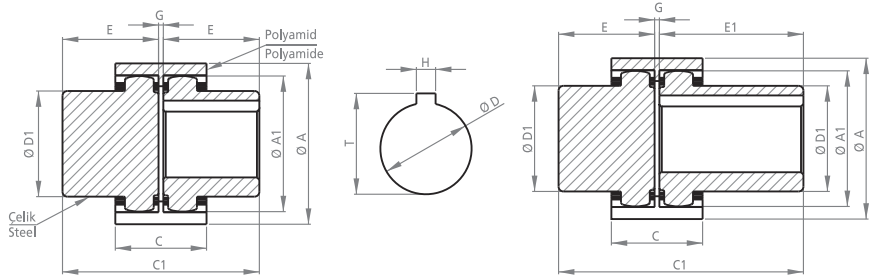
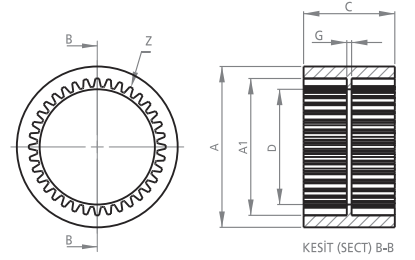


POMPA MİLİNE GÖRE İŞLENMİŞ KAPLINLER  
PROCESSED COUPLINGS PUMP SHAFT

KOD CODE	B	B1	D1	D2	E	F	F1	F2	H	K	R	T	T1	Z	Z1
DK38-1P03	37	20	58	35	42	14.5	15	10	4.00	1/8	16.66	18.66	-	37	-
DK38-1P03T	37	20	58	35	42	14.5	15	10	3.20	1/8	16.66	18.26	-	37	-
DK382PK03	37	15	58	-	42	14.5	-	-	4.00	1/8	21.59	23.60	-	37	-
DK382PD03	-	-	58	-	42	14.5	-	-	6.35	-	22.15	25.35	-	37	-
DK38-11303	37	20	58	29	42	14.5	15	10	3.20	1/5	17.00	18.60	-	37	-
DK38-SAE-A-03	-	-	58	-	42	14.5	-	-	5.00	-	19.05	21.55	-	37	-
DK383PD	-	-	58	-	42	14.5	-	-	8.00	-	31.75	35.75	-	37	-
DK3813F-03	-	-	58	-	42	14.5	-	-	-	-	-	-	21.80	37	13
DK3813F-1-03	-	-	58	-	42	14.5	-	-	-	-	-	-	22.20	37	13
DK3815F-03	-	-	58	-	42	14.5	-	-	-	-	-	-	25.20	37	15
DK3814F-1-03	-	-	58	-	42	14.5	-	-	-	-	-	-	29.85	37	14
DK3814F-2-03	-	-	58	-	42	14.5	-	-	-	-	-	-	30.00	37	14
DK3814F-3-03	-	-	58	-	42	14.5	-	-	-	-	-	-	31.70	37	14
DK3814F-4-03	-	-	58	-	42	14.5	-	-	-	-	-	-	27.25	37	14
DK388F-03	-	-	58	-	42	14.5	-	-	-	-	-	-	36.10	37	8
DK3818F-03	-	-	58	-	42	14.5	-	-	-	-	-	-	39.70	37	18



KOD CODE	A	A1	C	D	G	Z
DK3802	84	70	47	58	7	37

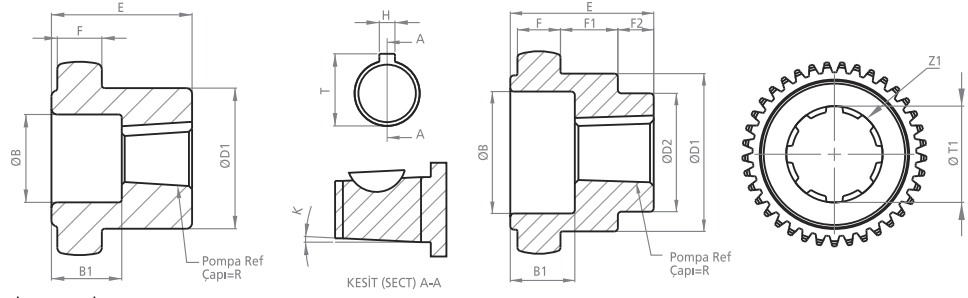


MOTOR MİLİNE GÖRE İŞLENMİŞ KAPLINLER  
PROCESSED COUPLINGS MOTOR SHAFT

KOD CODE	A	A1	C	C1	D	D1	E	E1	G	H	T	Z
DK3803	84	69	47	86	-	58	42	-	2	-	-	37
DK381903	84	69	47	86	19	58	42	-	2	6	22	37
DK382403	84	69	47	86	24	58	42	-	2	8	28	37
DK382803	84	69	47	86	28	58	42	-	2	8	32	37
DK383803	84	69	47	86	38	58	42	-	2	10	43	37
UDK3803	84	69	47	106	-	58	42	62	2	-	-	37
UDK381903	84	69	47	106	19	58	42	62	2	6	22	37
UDK382403	84	69	47	106	24	58	42	62	2	8	28	37
UDK382803	84	69	47	106	28	58	42	62	2	8	32	37
UDK383803	84	69	47	106	38	58	42	62	2	10	43	37

TOLERANSLAR MİL ÖLÇÜLERİNDE: -0 +0.05, DİĞER ÖLÇÜLERDE: ±0.15  
TOLERANCES SHAFT DIMENSIONS: -0 +0.05, OTHER DIMENSIONS: ±0.15

Motor Mil Çapları için  
sayfa 26'ya bakınız.  
Look at the paper 26 for  
Motor Shaft Diameters.

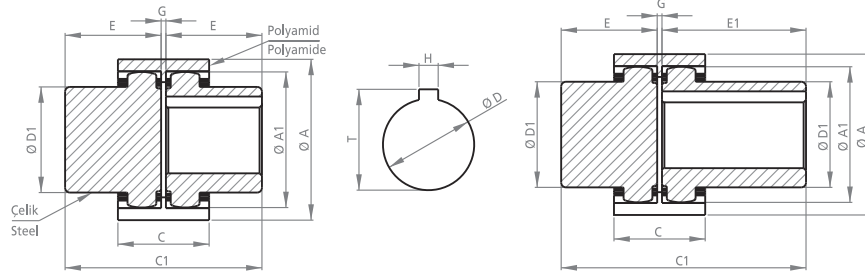
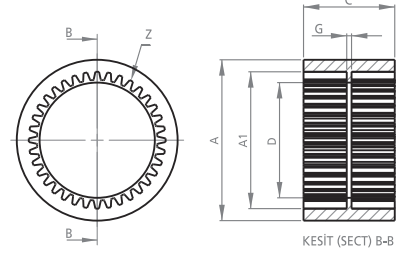


POMPA MİLİNE GÖRE İŞLENMİŞ KAPLİNLER  
PROCESSED COUPLINGS PUMP SHAFT

KOD CODE	B	B1	D1	D2	E	F	F1	F2	H	K	R	T	T1	Z	Z1
DK42-1P03	37	20	60	35	42	14	15	10	4.00	1/8	16.66	18.66	-	39	-
DK42-1P03T	37	20	60	35	42	14	15	10	3.20	1/8	16.66	18.26	-	39	-
DK422PK03	37	15	60	-	42	14	-	-	4.00	1/8	21.59	23.60	-	39	-
DK422PD03	-	-	60	-	42	14	-	-	6.35	-	22.15	25.35	-	39	-
DK4211303	37	20	60	-	42	14	-	-	3.20	1/5	17.00	18.60	-	39	-
DK42-SAE-A-03	-	-	60	-	42	14	-	-	5.00	-	19.05	21.55	-	39	-
DK423PD	-	-	60	-	42	14	-	-	8.00	-	31.75	35.75	-	39	-
DK42-25-03	-	-	60	-	42	14	-	-	8.00	-	25.40	29.40	-	39	-
DK4213F-03	-	-	60	-	42	14	-	-	-	-	-	-	21.80	39	13
DK4213F-1-03	-	-	60	-	42	14	-	-	-	-	-	-	22.20	39	13
DK4215F-03	-	-	60	-	42	14	-	-	-	-	-	-	25.20	39	15
DK4214F-1-03	-	-	60	-	42	14	-	-	-	-	-	-	29.85	39	14
DK4214F-2-03	-	-	60	-	42	14	-	-	-	-	-	-	30.00	39	14
DK4214F-3-03	-	-	60	-	42	14	-	-	-	-	-	-	31.70	39	14
DK4214F-4-03	-	-	60	-	42	14	-	-	-	-	-	-	27.25	39	14
DK428F-03	-	-	60	-	42	14	-	-	-	-	-	-	36.10	39	8
DK4218F-03	-	-	60	-	42	14	-	-	-	-	-	-	39.70	39	18



KOD CODE	A	A1	C	D	G	Z
DK4202	88	73.5	52	62	10	39



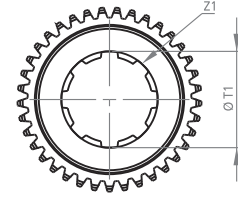
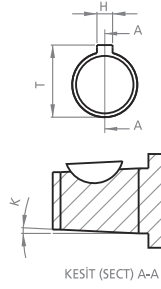
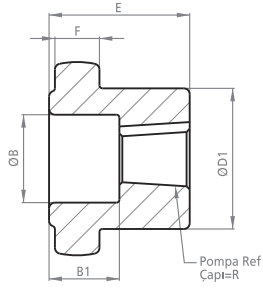
MOTOR MİLİNE GÖRE İŞLENMİŞ KAPLİNLER  
PROCESSED COUPLINGS MOTOR SHAFT

KOD CODE	A	A1	C	C1	D	D1	E	E1	G	H	T	Z
DK4203	88	71.8	52	88	-	60	42	-	4	-	-	39
DK421903	88	71.8	52	88	19	60	42	-	4	6	22	39
DK422403	88	71.8	52	88	24	60	42	-	4	8	28	39
DK422803	88	71.8	52	88	28	60	42	-	4	8	32	39
DK423803	88	71.8	52	88	38	60	42	-	4	10	43	39
DK424203	88	71.8	52	88	42	60	42	-	4	12	47	39
UDK4203	88	71.8	52	108	-	60	42	62	4	-	-	39
UDK422403	88	71.8	52	108	24	60	42	62	4	8	28	39
UDK422803	88	71.8	52	108	28	60	42	62	4	8	32	39
UDK423803	88	71.8	52	108	38	60	42	62	4	10	43	39
UDK424203	88	71.8	52	108	42	60	42	62	4	12	47	39

Motor Mil Çapları için  
sayfa 26'ya bakınız.  
Look at the paper 26 for  
Motor Shaft Diameters.

TOLERANSLAR MİL ÖLÇÜLERİNDE: -0 +0,05, DİĞER ÖLÇÜLERDE: ±0,15  
TOLERANCES SHAFT DIMENSIONS: -0 +0,05, OTHER DIMENSIONS: ±0,15

Tasarım Tescil No Design Registration Certificate Number: 2001 01950

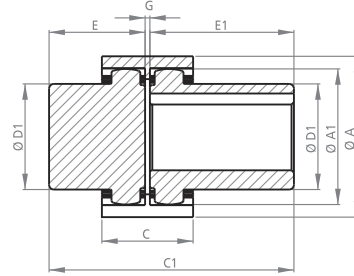
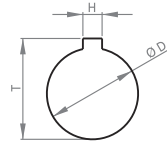
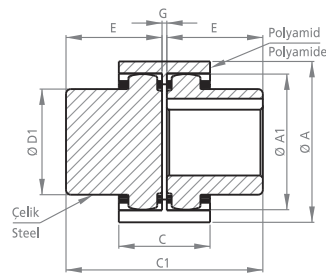
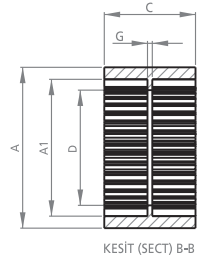
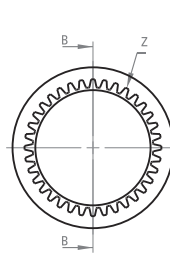
**DK55****KAPLİN****COUPLING**

**POMPA MİLİNE GÖRE İŞLENMİŞ KAPLİNLER**  
**PROCESSED COUPLINGS PUMP SHAFT**

KOD CODE	B	B1	D1	E	F	H	K	R	T	T1	Z	Z1
DK55-1P03	40	33	85	55	17	4.00	1/8	16.66	18.66	-	48	-
DK55-1P03T	40	33	85	55	17	3.20	1/8	16.66	18.26	-	48	-
DK552PK03	40	28	85	55	17	4.00	1/8	21.59	23.60	-	48	-
DK552PD03	-	-	85	55	17	6.35	-	22.15	25.35	-	48	-
DK55-SAE-A-03	-	-	85	55	17	5.00	-	19.05	21.55	-	48	-
DK553PD	-	-	85	55	17	8.00	-	31.75	35.75	-	48	-
DK5513F-03	-	-	85	55	17	-	-	-	-	21.80	48	13
DK5513F-1-03	-	-	85	55	17	-	-	-	-	22.20	48	13
DK5515F-03	-	-	85	55	17	-	-	-	-	25.20	48	15
DK5514F-1-03	-	-	85	55	17	-	-	-	-	29.85	48	14
DK5514F-2-03	-	-	85	55	17	-	-	-	-	30.00	48	14
DK5514F-3-03	-	-	85	55	17	-	-	-	-	31.70	48	14
DK5514F-4-03	-	-	85	55	17	-	-	-	-	27.25	48	14
DK558F-03	-	-	85	55	17	-	-	-	-	36.10	48	8
DK5518F-03	-	-	85	55	17	-	-	-	-	39.70	48	18



KOD CODE	A	A1	C	D	G	Z
DK5502	121	101.7	58	70	12	48



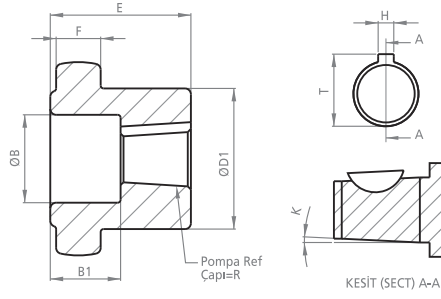
**MOTOR MİLİNE GÖRE İŞLENMİŞ KAPLİNLER**  
**PROCESSED COUPLINGS MOTOR SHAFT**

KOD CODE	A	A1	C	C1	D	D1	E	E1	G	H	T	Z
DK5503	121	99.3	58	113	12	85	55	-	3	-	-	48
DK552403	121	99.3	58	113	24	85	55	-	3	8	28	48
DK552803	121	99.3	58	113	28	85	55	-	3	8	32	48
DK553803	121	99.3	58	113	38	85	55	-	3	10	43	48
DK554203	121	99.3	58	113	42	85	55	-	3	12	47	48
DK554803	121	99.3	58	113	48	85	55	-	3	14	53	48
DK555503	121	99.3	58	113	55	85	55	-	3	16	60	48
UDK5503	121	99.3	58	133	12	85	55	75	3	-	-	48
UDK553803	121	99.3	58	133	38	85	55	75	3	10	43	48
UDK554203	121	99.3	58	133	42	85	55	75	3	12	47	48
UDK554803	121	99.3	58	133	48	85	55	75	3	14	53	48
UDK555503	121	99.3	58	133	55	85	55	75	3	16	60	48

TOLERANSLAR MİL ÖLÇÜLERİNDE: -0 +0.05, DİĞER ÖLÇÜLERDE: ±0.15  
 TOLERANCES SHAFT DIMENSIONS: -0 +0.05, OTHER DIMENSIONS: ±0.15

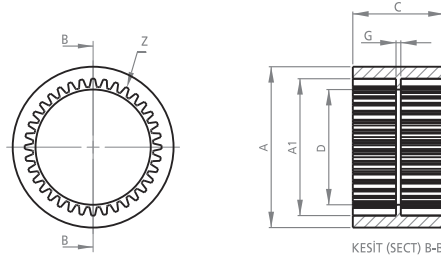
Tasarım Tescil No Design Registration Certificate Number: 2001 01950

Motor Mil Çapları için  
sayfa 26'ya bakınız.  
Look at the paper 26 for  
Motor Shaft Diameters.

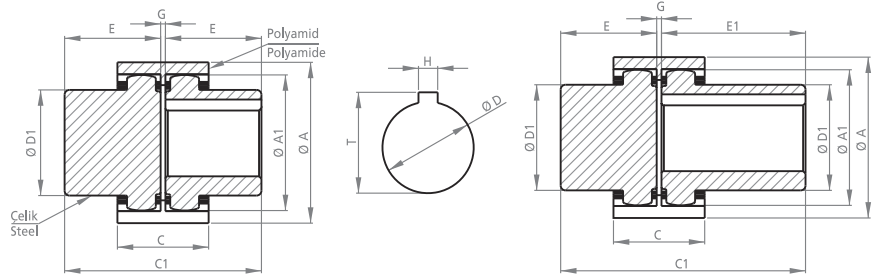


POMPA MİLİNE GÖRE İŞLENMİŞ KAPLINLER  
PROCESSED COUPLINGS PUMP SHAFT

KOD CODE	B	B1	D1	E	F	H	K	R	T	Z
DK140P03	15	12	24	24	7.6	2.5	1/8	9.5	10.75	20
DK141203	-	-	24	24	7.6	3	0	12	13.5	20



KOD CODE	A	A1	C	D	G	Z
DK1402	40	33	28	24	4	20



MOTOR MİLİNE GÖRE İŞLENMİŞ KAPLINLER  
PROCESSED COUPLINGS MOTOR SHAFT

KOD CODE	A	A1	D	D1	C	C1	E	E1	G	H	T	Z
DKP1403	40	32.5	-	23	28	41	20	-	1	-	-	20
DK1405	40	32.5	-	24	28	50	24	-	2	-	-	20
DK141103	40	32.5	11	24	28	50	24	-	2	4	13	20
DK141403	40	32.5	14	24	28	50	24	-	2	5	16.5	20
UDK1405	40	32.5	-	24	28	56	24	30	2	-	-	20
UDK141103	40	32.5	11	24	28	56	24	30	2	4	13	20
UDK141403	40	32.5	14	24	28	56	24	30	2	5	16.5	20

Motor Mil Çapları için  
sayfa 26'ya bakınız.  
Look at the paper 26 for  
Motor Shaft Diameters.

DKP: PLASTİK DİŞLİ DK: ÇELİK DİŞLİ  
DKP: PLASTIC GEAR DK: STEEL GEAR

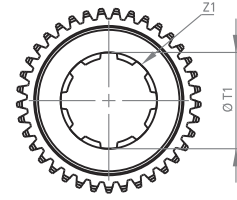
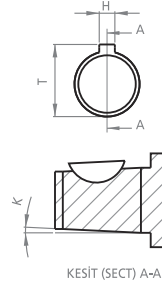
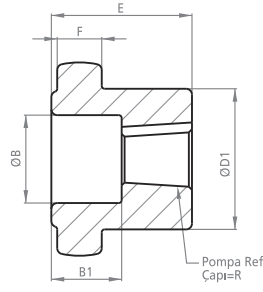
TOLERANSLAR MİL ÖLÇÜLERİNDE: - 0 +0.05 , DİĞER ÖLÇÜLERDE: ±0.15  
TOLERANCES SHAFT DIMENSIONS : - 0 +0.05 , OTHER DIMENSIONS: ±0.15

Tasarım Tescil No Design Registration Certificate Number: 2001 01950

## KAPLIN

## COUPLING

## DK60

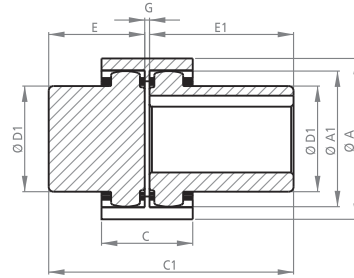
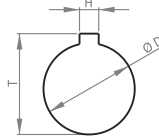
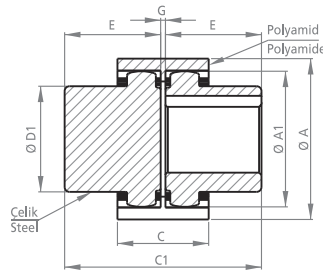
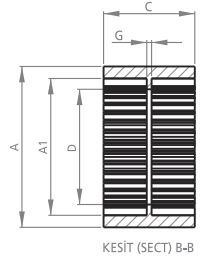
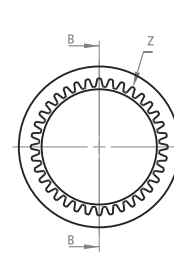


POMPA MİLİNE GÖRE İŞLENMİŞ KAPLINLER  
PROCESSED COUPLINGS PUMP SHAFT

KOD CODE	B	B1	D1	E	F	H	K	R	T	T1	Z	Z1
DK60-1P03	40	46	91	68	18	4.00	1/8	16.66	18.66	-	55	-
DK60-1P03T	40	46	91	68	18	3.20	1/8	16.66	18.26	-	55	-
DK602PK03	60	41	91	68	18	4.00	1/8	21.59	23.60	-	55	-
DK602PD03	-	-	91	68	18	6.35	-	22.15	25.35	-	55	-
DK60-SAE-A-03	-	-	91	68	18	5.00	-	19.05	21.55	-	55	-
DK603PD	-	-	91	68	18	8.00	-	31.75	35.75	-	55	-
DK6013F-03	-	-	91	68	18	-	-	-	-	21.80	55	13
DK6013F-1-03	-	-	91	68	18	-	-	-	-	22.20	55	13
DK6015F-03	-	-	91	68	18	-	-	-	-	25.20	55	15
DK6014F-1-03	-	-	91	68	18	-	-	-	-	29.85	55	14
DK6014F-2-03	-	-	91	68	18	-	-	-	-	30.00	55	14
DK6014F-3-03	-	-	91	68	18	-	-	-	-	31.70	55	14
DK6014F-4-03	-	-	91	68	18	-	-	-	-	27.25	55	14
DK608F-03	-	-	91	68	18	-	-	-	-	36.10	55	8
DK6018F-03	-	-	91	68	18	-	-	-	-	39.70	55	18



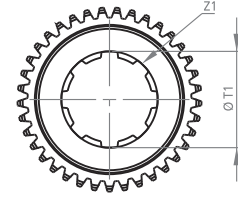
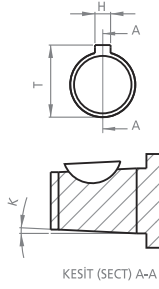
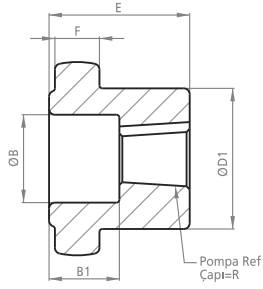
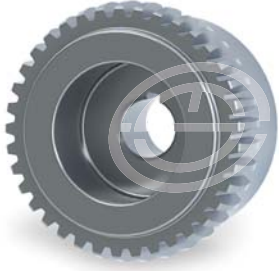
KOD CODE	A	A1	C	D	G	Z
DK6002	138	113	68	100	13.5	55



MOTOR MİLİNE GÖRE İŞLENMİŞ KAPLINLER  
PROCESSED COUPLINGS MOTOR SHAFT

KOD CODE	A	A1	C	C1	D	D1	E	E1	G	H	T	Z
DK6003	138	112.5	68	139.5	16	91	68	-	3.5	-	-	55
DK603803	138	112.5	68	139.5	38	91	68	-	3.5	10	43	55
DK604203	138	112.5	68	139.5	42	91	68	-	3.5	12	47	55
DK604803	138	112.5	68	139.5	48	91	68	-	3.5	14	53	55
DK605503	138	112.5	68	139.5	55	91	68	-	3.5	16	60	55
DK606003	138	112.5	68	139.5	60	91	68	-	3.5	18	66	55
UDK6003	138	112.5	68	156.5	16	91	68	85	3.5	-	-	55
UDK603803	138	112.5	68	156.5	38	91	68	85	3.5	10	43	55
UDK604203	138	112.5	68	156.5	42	91	68	85	3.5	12	47	55
UDK604803	138	112.5	68	156.5	48	91	68	85	3.5	14	53	55
UDK605503	138	112.5	68	156.5	55	91	68	85	3.5	16	60	55
UDK606003	3138	112.5	68	156.5	60	91	68	85	3.5	18	66	55

Motor Mil Çapları için  
sayfa 26'ya bakınız.  
Look at the paper 26 for  
Motor Shaft Diameters.

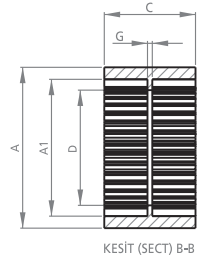
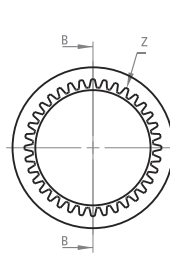
**DK55****KAPLİN****COUPLING**

**POMPA MİLİNE GÖRE İŞLENMİŞ KAPLİNLER**  
**PROCESSED COUPLINGS PUMP SHAFT**

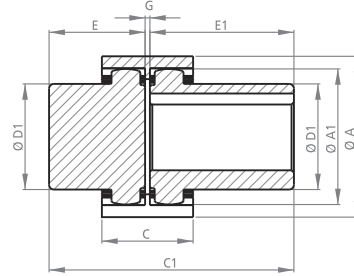
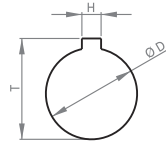
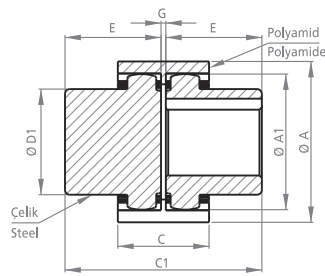
KOD CODE	B	B1	D1	E	F	H	K	R	T	T1	Z	Z1
DK55-1P03	40	33	85	55	17	4.00	1/8	16.66	18.66	-	48	-
DK55-1P03T	40	33	85	55	17	3.20	1/8	16.66	18.26	-	48	-
DK552PK03	40	28	85	55	17	4.00	1/8	21.59	23.60	-	48	-
DK552PD03	-	-	85	55	17	6.35	-	22.15	25.35	-	48	-
DK55-SAE-A-03	-	-	85	55	17	5.00	-	19.05	21.55	-	48	-
DK553PD	-	-	85	55	17	8.00	-	31.75	35.75	-	48	-
DK5513F-03	-	-	85	55	17	-	-	-	-	21.80	48	13
DK5513F-1-03	-	-	85	55	17	-	-	-	-	22.20	48	13
DK5515F-03	-	-	85	55	17	-	-	-	-	25.20	48	15
DK5514F-1-03	-	-	85	55	17	-	-	-	-	29.85	48	14
DK5514F-2-03	-	-	85	55	17	-	-	-	-	30.00	48	14
DK5514F-3-03	-	-	85	55	17	-	-	-	-	31.70	48	14
DK5514F-4-03	-	-	85	55	17	-	-	-	-	27.25	48	14
DK558F-03	-	-	85	55	17	-	-	-	-	36.10	48	8
DK5518F-03	-	-	85	55	17	-	-	-	-	39.70	48	18



KOD CODE	A	A1	C	D	G	Z
DK5502	121	101.7	58	70	12	48



KESİT (SECT) B-B



**MOTOR MİLİNE GÖRE İŞLENMİŞ KAPLİNLER**  
**PROCESSED COUPLINGS MOTOR SHAFT**

KOD CODE	A	A1	C	C1	D	D1	E	E1	G	H	T	Z
DK5503	121	99.3	58	113	12	85	55	-	3	-	-	48
DK552403	121	99.3	58	113	24	85	55	-	3	8	28	48
DK552803	121	99.3	58	113	28	85	55	-	3	8	32	48
DK553803	121	99.3	58	113	38	85	55	-	3	10	43	48
DK554203	121	99.3	58	113	42	85	55	-	3	12	47	48
DK554803	121	99.3	58	113	48	85	55	-	3	14	53	48
DK555503	121	99.3	58	113	55	85	55	-	3	16	60	48
UDK5503	121	99.3	58	133	12	85	55	75	3	-	-	48
UDK553803	121	99.3	58	133	38	85	55	75	3	10	43	48
UDK554203	121	99.3	58	133	42	85	55	75	3	12	47	48
UDK554803	121	99.3	58	133	48	85	55	75	3	14	53	48
UDK555503	121	99.3	58	133	55	85	55	75	3	16	60	48

TOLERANSLAR MİL ÖLÇÜLERİNDE: -0 +0.05, DİĞER ÖLÇÜLERDE: ±0.15  
 TOLERANCES SHAFT DIMENSIONS: -0 +0.05, OTHER DIMENSIONS: ±0.15

Tasarım Tescil No Design Registration Certificate Number: 2001 01950

**ESMAKSAN**

**Khazini**

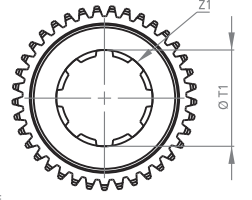
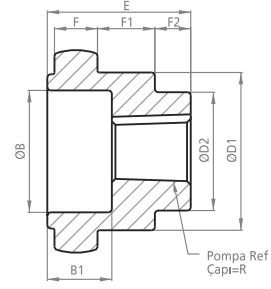
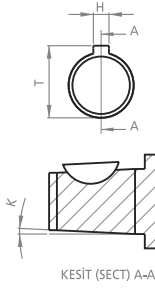
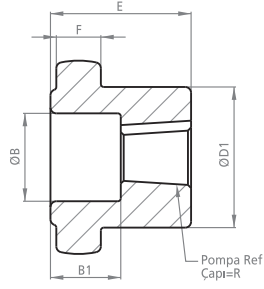
**EMS**  
ESMAKSAN

Motor Mil Çapları için  
sayfa 26'ya bakınız.  
Look at the paper 26 for  
Motor Shaft Diameters.

## KAPLIN

## COUPLING

## DK42-A

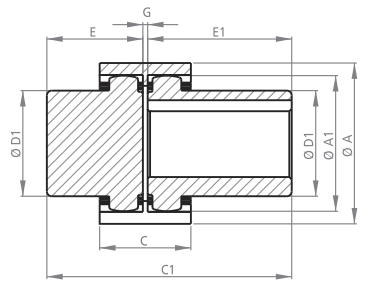
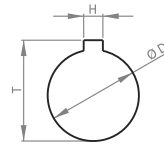
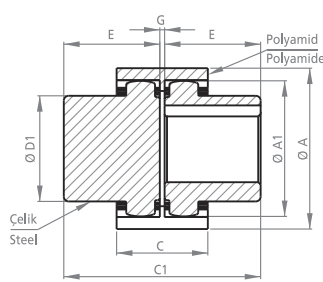
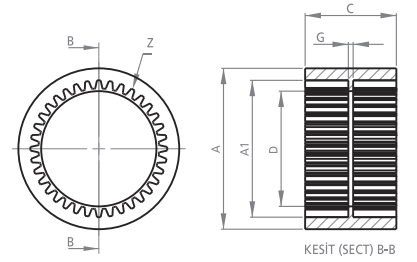


POMPA MİLİNE GÖRE İŞLENMİŞ KAPLINLER  
PROCESSED COUPLINGS PUMP SHAFT

KOD CODE	B	B1	D1	D2	E	F	F1	F2	H	K	R	T	T1	Z	Z1
DK42-1P03A	37	20	60	35	42	14	15	10	4.00	1/8	16.66	18.66	-	44	-
DK42-1P03TA	37	20	60	35	42	14	15	10	3.20	1/8	16.66	18.26	-	44	-
DK422PK03A	37	15	60	-	42	14	-	-	4.00	1/8	21.59	23.60	-	44	-
DK422PD03A	-	-	60	-	42	14	-	-	6.35	-	22.15	25.35	-	44	-
DK4211303A	37	20	60	-	42	14	-	-	3.20	1/5	17.00	18.60	-	44	-
DK42-SAE-A-03A	-	-	60	-	42	14	-	-	5.00	-	19.05	21.55	-	44	-
DK423PDA	-	-	60	-	42	14	-	-	8.00	-	31.75	35.75	-	44	-
DK42-25-03A	-	-	60	-	42	14	-	-	8.00	-	25.40	29.40	-	44	-
DK4213F-03A	-	-	60	-	42	14	-	-	-	-	-	-	21.80	44	13
DK4213F-1-03A	-	-	60	-	42	14	-	-	-	-	-	-	22.00	44	13
DK4215F-03A	-	-	60	-	42	14	-	-	-	-	-	-	25.20	44	15
DK4214F-1-03A	-	-	60	-	42	14	-	-	-	-	-	-	29.85	44	14
DK4214F-2-03A	-	-	60	-	42	14	-	-	-	-	-	-	30.00	44	14
DK4214F-3-03A	-	-	60	-	42	14	-	-	-	-	-	-	31.70	44	14
DK4214F-4-03A	-	-	60	-	42	14	-	-	-	-	-	-	27.25	44	14
DK428F-03A	-	-	60	-	42	14	-	-	-	-	-	-	36.10	44	8
DK4218F-03A	-	-	60	-	42	14	-	-	-	-	-	-	39.70	44	18



KOD CODE	A	A1	C	D	G	Z
DK4202A	88	73.5	52	62	10	44



MOTOR MİLİNE GÖRE İŞLENMİŞ KAPLINLER  
PROCESSED COUPLINGS MOTOR SHAFT

KOD CODE	A	A1	C	C1	D	D1	E	E1	G	H	T	Z
DK4203A	88	72.25	52	88	-	60	42	-	4	-	-	44
DK421903A	88	72.25	52	88	19	60	42	-	4	6	22	44
DK422403A	88	72.25	52	88	24	60	42	-	4	8	28	44
DK422803A	88	72.25	52	88	28	60	42	-	4	8	32	44
DK423803A	88	72.25	52	88	38	60	42	-	4	10	43	44
DK424203A	88	72.25	52	88	42	60	42	-	4	12	47	44
UDK4203A	88	72.25	52	108	-	60	42	62	4	-	-	44
UDK422403A	88	72.25	52	108	24	60	42	62	4	8	28	44
UDK422803A	88	72.25	52	108	28	60	42	62	4	8	32	44
UDK423803A	88	72.25	52	108	38	60	42	62	4	10	43	44
UDK424203A	88	72.25	52	108	42	60	42	62	4	12	47	44

TOLERANSLAR MİL ÖLÇÜLERİNDE: -0 +0,05, DİĞER ÖLÇÜLERDE: ±0,15  
TOLERANCES SHAFT DIMENSIONS: -0 +0,05, OTHER DIMENSIONS: ±0,15

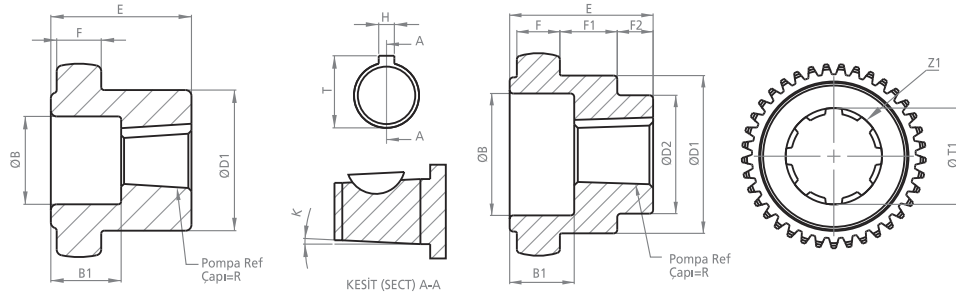
Tasarım Tescil No Design Registration Certificate Number: 2001 01950

Motor Mil Çapları için  
sayfa 26'ya bakınız.  
Look at the paper 26 for  
Motor Shaft Diameters.

# DK48-A

## KAPLİN

## COUPLING

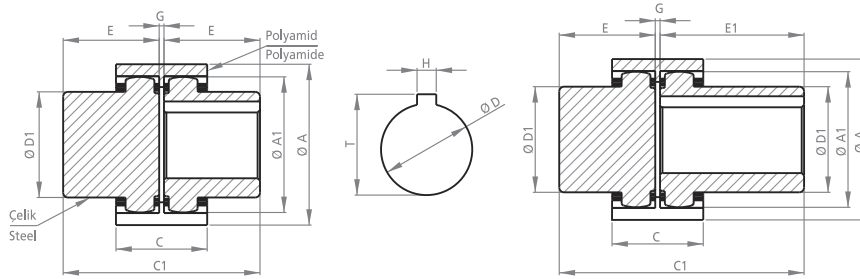
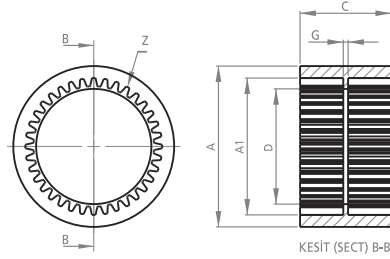


### POMPA MİLİNE GÖRE İŞLENMİŞ KAPLİNLER PROCESSED COUPLINGS PUMP SHAFT

KOD CODE	B	B1	D1	D2	E	F	F1	F2	H	K	R	T	T1	Z	Z1
DK48-1P03A	48	25	68	35	47	14	20	9	4.00	1/8	16.66	18.66	-	50	-
DK48-1P03TA	48	25	68	35	47	14	20	9	3.20	1/8	16.66	18.26	-	50	-
DK482PK03A	47	20	68	-	47	14	-	-	4.00	1/8	21.59	23.60	-	50	-
DK482PD03A	-	-	68	-	47	14	-	-	6.35	-	22.15	25.35	-	50	-
DK48-SAE-A-03A	-	-	68	-	47	14	-	-	5.00	-	19.05	21.55	-	50	-
DK483PDA	-	-	68	-	47	14	-	-	8.00	-	31.75	35.75	-	50	-
DK4813F-03A	-	-	68	-	47	14	-	-	-	-	-	-	21.80	50	13
DK4813F-1-03A	-	-	68	-	47	14	-	-	-	-	-	-	22.00	50	13
DK4815F-03A	-	-	68	-	47	14	-	-	-	-	-	-	25.20	50	15
DK4814F-1-03A	-	-	68	-	47	14	-	-	-	-	-	-	29.85	50	14
DK4814F-2-03A	-	-	68	-	47	14	-	-	-	-	-	-	30.00	50	14
DK4814F-3-03A	-	-	68	-	47	14	-	-	-	-	-	-	31.70	50	14
DK4814F-4-03A	-	-	68	-	47	14	-	-	-	-	-	-	27.25	50	14
DK488F-03A	-	-	68	-	47	14	-	-	-	-	-	-	36.10	50	8
DK4818F-03A	-	-	68	-	47	14	-	-	-	-	-	-	39.70	50	18



KOD CODE	A	A1	C	D	G	Z
DK4802A	99	79	48	67	10	50



### MOTOR MİLİNE GÖRE İŞLENMİŞ KAPLİNLER PROCESSED COUPLINGS MOTOR SHAFT

KOD CODE	A	A1	C	C1	D	D1	E	E1	G	H	T	Z
DK4803A	99	77.25	48	96	-	68	47	-	2	-	-	50
DK481903A	99	77.25	48	96	19	68	47	-	2	6	22	50
DK482403A	99	77.25	48	96	24	68	47	-	2	8	28	50
DK482803A	99	77.25	48	96	28	68	47	-	2	8	32	50
DK483803A	99	77.25	48	96	38	68	47	-	2	10	43	50
DK484203A	99	77.25	48	96	42	68	47	-	2	12	47	50
DK484803A	99	77.25	48	96	48	68	47	-	2	14	53	50
UDK4803A	99	77.25	48	116	-	68	47	67	2	-	-	50
UDK482803A	99	77.25	48	116	28	68	47	67	2	8	32	50
UDK483803A	99	77.25	48	116	38	68	47	67	2	10	43	50
UDK484203A	99	77.25	48	116	42	68	47	67	2	12	47	50
UDK484803A	99	77.25	48	116	48	68	47	67	2	14	53	50

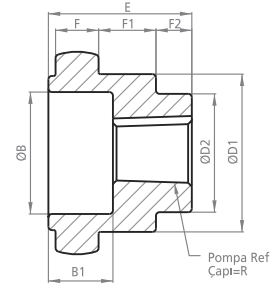
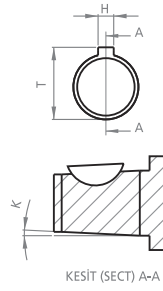
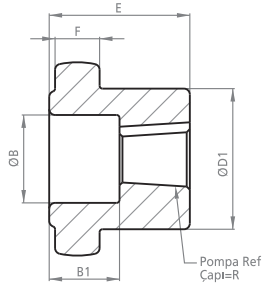
Motor Mil Çapları için  
sayfa 26'ya bakınız.  
Look at the paper 26 for  
Motor Shaft Diameters.

TOLERANSLAR MİL ÖLÇÜLERİNDE: -0 +0.05, DİĞER ÖLÇÜLERDE: ±0.15  
TOLERANCES SHAFT DIMENSIONS: -0 +0.05, OTHER DIMENSIONS: ±0.15  
Tasarım Tescil No Design Registration Certificate Number: 2001 01950

# DK28-A

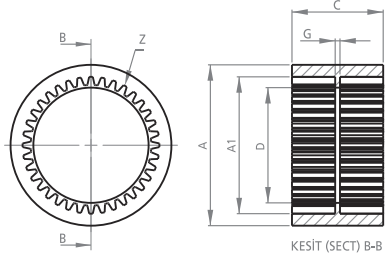
## KAPLİN

## COUPLING

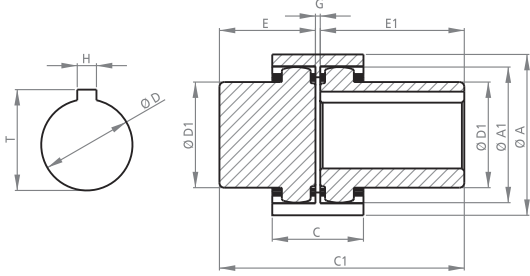
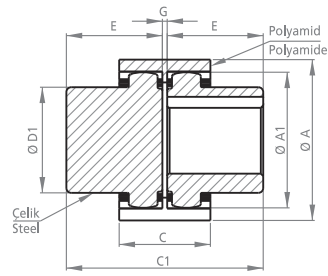


### POMPA MİLİNE GÖRE İŞLENMİŞ KAPLİNLER PROCESSED COUPLINGS PUMP SHAFT

KOD CODE	B	B1	D1	D2	E	F	F1	F2	H	K	R	T	Z
DK280PD03A	-	-	43.70	-	40	12	-	-	4.00	-	13.45	15.45	34
DK28-G2B-03A	-	-	43.70	-	40	12	-	-	3.00	-	12.50	14.00	34
DK280PK03A	22	28	43.70	31	40	12	15	11	2.50	1/8	9.50	10.75	34
DK2811303A	34	18	43.70	29	40	12	16	10	3.20	1/5	17.00	18.60	34
DK2811703A	34	18	43.70	30	40	12	16	10	3.20	1/8	15.00	16.60	34
DK28-1P-03A	34	18	43.70	33	40	12	16	10	4.00	1/8	16.66	18.66	34
DK28-1P-03TA	34	18	43.70	33	40	12	16	10	3.20	1/8	16.66	18.26	34
DK282PK03A	34	13	43.70	-	40	12	-	-	4.00	1/8	21.59	23.60	34
DK282PD03A	-	-	43.70	-	40	12	-	-	6.35	-	22.15	25.35	34
DK28-SAE-A-03A	-	-	43.70	-	40	12	-	-	5.00	-	19.05	21.55	34



KOD CODE	A	A1	C	D	G	Z
DK2802A	67	57	38	47	5	34



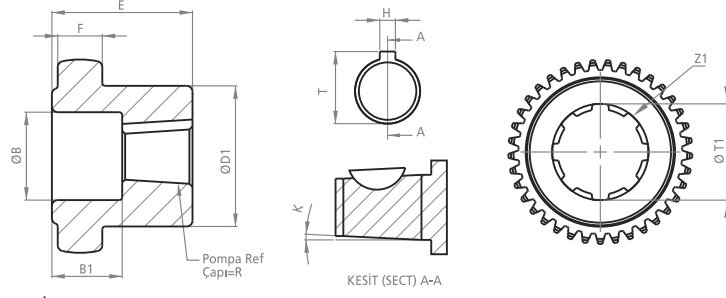
### MOTOR MİLİNE GÖRE İŞLENMİŞ KAPLİNLER PROCESSED COUPLINGS MOTOR SHAFT

KOD CODE	A	A1	C	C1	D	D1	E	E1	G	H	T	Z
DK2803A	67	56.5	40	82	-	43.7	40	-	2	-	-	34
DK281103A	67	56.5	40	82	11	43.7	40	-	2	4	13	34
DK281403A	67	56.5	40	82	14	43.7	40	-	2	5	16.5	34
DK281903A	67	56.5	40	82	19	43.7	40	-	2	6	22	34
DK282403A	67	56.5	40	82	24	43.7	40	-	2	8	28	34
DK282503A	67	56.5	40	82	25	43.7	40	-	2	8	29	34
DK282803A	67	56.5	40	82	28	43.7	40	-	2	8	32	34
UDK2803A	67	56.5	40	102	-	43.7	40	60	2	-	-	34
UDK281903A	67	56.5	40	102	19	43.7	40	60	2	6	22	34
UDK282403A	67	56.5	40	102	24	43.7	40	60	2	8	28	34
UDK282503A	67	56.5	40	102	25	43.7	40	60	2	8	29	34
UDK282803A	67	56.5	40	102	28	43.7	40	60	2	8	32	34

Motor Mil Çapları için  
sayfa 26'ya bakınız.  
Look at the paper 26 for  
Motor Shaft Diameters.

TOLERANSLAR MİL ÖLÇÜLERİNDE: - 0 +0.05, DİĞER ÖLÇÜLERDE: ±0.15  
TOLERANCES SHAFT DIMENSIONS: - 0 +0.05, OTHER DIMENSIONS: ±0.15

Tasarım Tescil No Design Registration Certificate Number: 2001 01950

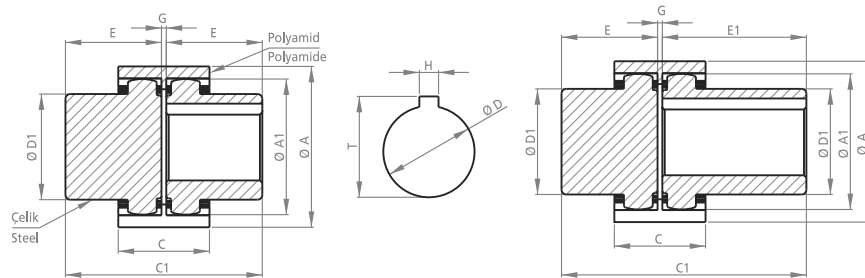
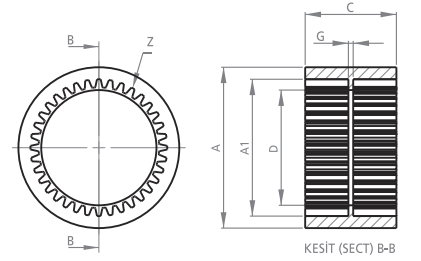


POMPA MİLİNE GÖRE İŞLENMİŞ KAPLINLER  
PROCESSED COUPLINGS PUMP SHAFT

KOD CODE	B	B1	D1	E	F	H	K	R	T	T1	Z	Z1
DK55-1P03A	40	33	85	55	17	4.00	1/8	16.66	18.66	-	45	-
DK55-1P03TA	40	33	85	55	17	3.20	1/8	16.66	18.26	-	45	-
DK552PK03A	40	28	85	55	17	4.00	1/8	21.59	23.60	-	45	-
DK552PD03A	-	-	85	55	17	6.35	-	22.15	25.35	-	45	-
DK55-SAE-A-03A	-	-	85	55	17	5.00	-	19.05	21.55	-	45	-
DK553PDA	-	-	85	55	17	8.00	-	31.75	35.75	-	45	-
DK5513F-03A	-	-	85	55	17	-	-	-	-	21.80	45	13
DK5513F-1-03A	-	-	85	55	17	-	-	-	-	22.00	45	13
DK5515F-03A	-	-	85	55	17	-	-	-	-	25.20	45	15
DK5514F-1-03A	-	-	85	55	17	-	-	-	-	29.85	45	14
DK5514F-2-03A	-	-	85	55	17	-	-	-	-	30.00	45	14
DK5514F-3-03A	-	-	85	55	17	-	-	-	-	31.70	45	14
DK5514F-4-03A	-	-	85	55	17	-	-	-	-	27.25	45	14
DK558F-03A	-	-	85	55	17	-	-	-	-	36.10	45	8
DK5518F-03A	-	-	85	55	17	-	-	-	-	39.70	45	18



KOD CODE	A	A1	C	D	G	Z
DK5502A	121	101.7	58	70	12	45



MOTOR MİLİNE GÖRE İŞLENMİŞ KAPLINLER  
PROCESSED COUPLINGS MOTOR SHAFT

KOD CODE	A	A1	C	C1	D	D1	E	E1	G	H	T	Z
DK5503A	121	99.3	58	113	12	85	55	-	3	-	-	45
DK552403A	121	99.3	58	113	24	85	55	-	3	8	28	45
DK552803A	121	99.3	58	113	28	85	55	-	3	8	32	45
DK553803A	121	99.3	58	113	38	85	55	-	3	10	43	45
DK554203A	121	99.3	58	113	42	85	55	-	3	12	47	45
DK554803A	121	99.3	58	113	48	85	55	-	3	14	53	45
DK555503A	121	99.3	58	113	55	85	55	-	3	16	60	45
UDK5503A	121	99.3	58	133	12	85	55	75	3	-	-	45
UDK553803A	121	99.3	58	133	38	85	55	75	3	10	43	45
UDK554203A	121	99.3	58	133	42	85	55	75	3	12	47	45
UDK554803A	121	99.3	58	133	48	85	55	75	3	14	53	45
UDK555503A	121	99.3	58	133	55	85	55	75	3	16	60	45

Motor Mil Çapları için  
sayfa 26'ya bakınız.  
Look at the paper 26 for  
Motor Shaft Diameters.

TOLERANSLAR MİL ÖLÇÜLERİNDE: -0 +0.05, DİĞER ÖLÇÜLERDE: ±0.15  
TOLERANCES SHAFT DIMENSIONS: -0 +0.05, OTHER DIMENSIONS: ±0.15

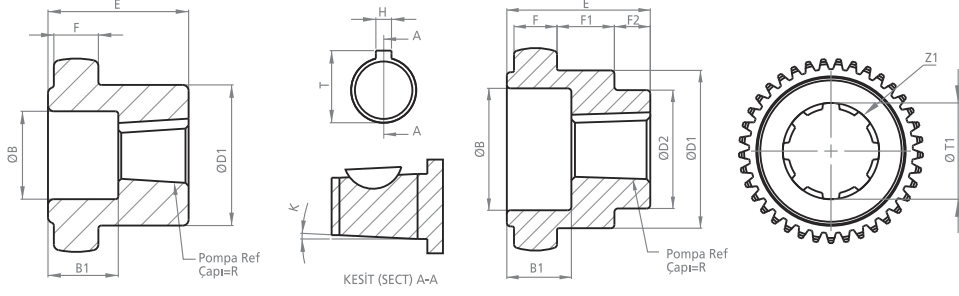
Tasarım Tescil No Design Registration Certificate Number: 2001 01950

# DK32-B

## KAPLIN

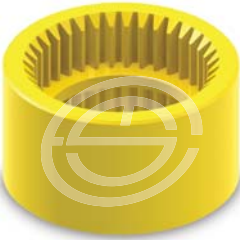
## COUPLING

**Khazini**

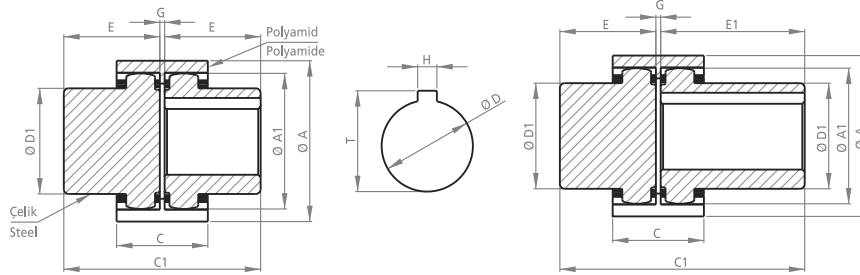
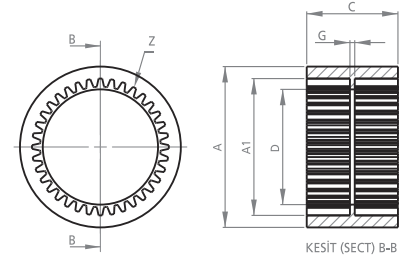


### POMPA MİLİNE GÖRE İŞLENMİŞ KAPLINLER PROCESSED COUPLINGS PUMP SHAFT

KOD CODE	B	B1	D1	D2	E	F	F1	F2	H	K	R	T	T1	Z	Z1
DK32-B	30	18	50	35	40	12	16	8	3.20	1/8	17.31	18.91	-	29	-
DK32-B11703	34	18	50	33	40	12	15.5	9.5	3.20	1/8	15.00	16.60	-	29	-
DK32-B1PK03	34	18	50	33	40	12	15.5	9.5	4.00	1/8	16.66	18.66	-	29	-
DK32-B1PK03 T	34	18	50	33	40	12	15.5	9.5	3.20	1/8	16.66	18.26	-	29	-
DK32-B2PK03	34	13	50	33	40	12	-	-	4.00	-	21.59	23.60	-	29	-
DK32-B2PD03	-	-	50	-	40	12	-	-	6.35	-	22.15	25.35	-	29	-
DK32-BSAE-A-03	-	-	50	-	40	12	-	-	5.00	-	19.05	21.55	-	29	-
DK32-B13F-03	-	-	50	-	40	12	-	-	-	-	-	-	21.80	29	13
DK32-B13F-1-03	-	-	50	-	40	12	-	-	-	-	-	-	22.20	29	13
DK32-B15F-03	-	-	50	-	40	12	-	-	-	-	-	-	25.20	29	15
DK32-B14F-1-03	-	-	50	-	40	12	-	-	-	-	-	-	29.85	29	14
DK32-B14F-2-03	-	-	50	-	40	12	-	-	-	-	-	-	30.00	29	14
DK32-B14F-3-03	-	-	50	-	40	12	-	-	-	-	-	-	31.70	29	14



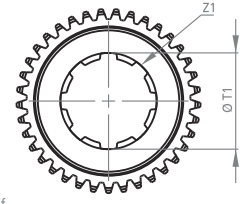
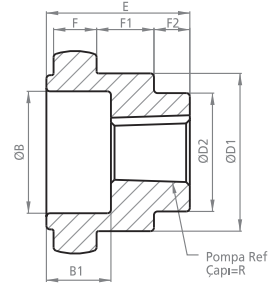
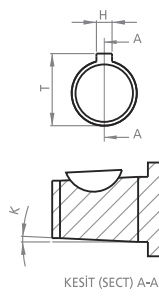
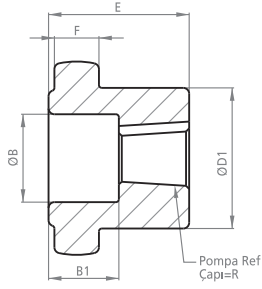
KOD CODE	A	A1	C	D	G	Z
DK32-B	80	62.5	52	42	3	29



### MOTOR MİLİNE GÖRE İŞLENMİŞ KAPLINLER PROCESSED COUPLINGS MOTOR SHAFT

KOD CODE	A	A1	C	C1	D	D1	E	E1	G	H	T	Z
DK32-B03	80	62.5	52	83	-	50	40	-	3	-	-	29
DK32-B1903	80	62.5	52	83	19	50	40	-	3	6	22	29
DK32-B2403	80	62.5	52	83	24	50	40	-	3	8	28	29
DK32-B2803	80	62.5	52	83	28	50	40	-	3	8	32	29
DK32-B3203	80	62.5	52	83	32	50	40	-	3	8	36	29
UDK32-B03	80	62.5	52	103	-	50	40	60	3	-	-	29
UDK32-B1903	80	62.5	52	103	19	50	40	60	3	6	22	29
UDK32-B2403	80	62.5	52	103	24	50	40	60	3	8	28	29
UDK32-B2803	80	62.5	52	103	28	50	40	60	3	8	32	29
UDK32-B3203	80	62.5	52	103	32	50	40	60	3	8	36	29

Motor Mil Çapları için  
sayfa 26'ya bakınız.  
Look at the paper 26 for  
Motor Shaft Diameters.

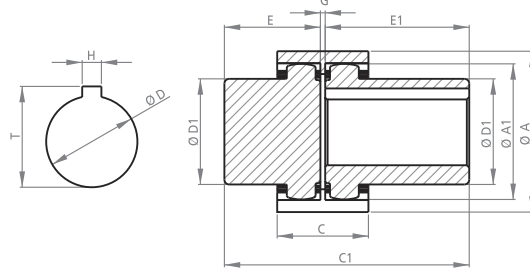
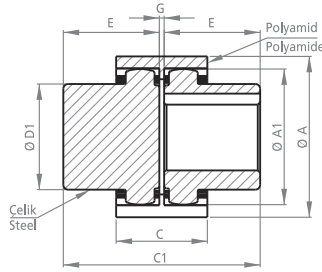
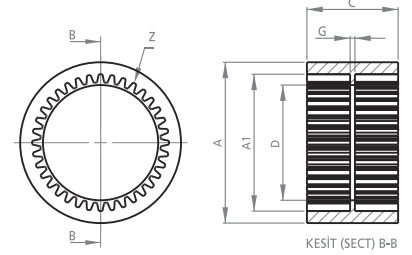


POMPA MİLİNE GÖRE İŞLENMİŞ KAPLINLER  
PROCESSED COUPLINGS PUMP SHAFT

KOD CODE	B	B1	D1	D2	E	F	F1	F2	H	K	R	T	T1	Z	Z1
DK50-B103	51	28	71	35	50	16	20	10	3.20	1/8	17.31	18.91	-	40	-
DK50-B203	40	23	71	48	-	-	20	10	4.00	1/8	21.77	23.77	-	40	-
DK50-B303	40	17	71	48	-	-	20	10	4.00	1/8	25.32	27.32	-	40	-
DK50-B1P03	48	25	71	35	-	-	20	9	4.00	1/8	16.66	18.66	-	40	-
DK50-B1P03T	48	25	71	35	-	-	20	9	3.20	1/8	16.66	18.26	-	40	-
DK50-B2PK03	47	20	71	-	-	-	-	-	4.00	1/8	21.59	23.60	-	40	-
DK50-B2PD03	-	-	71	-	-	-	-	-	6.35	-	22.15	25.35	-	40	-
DK50-B-SAE-A03	-	-	71	-	-	-	-	-	5.00	-	19.05	21.55	-	40	-
DK50-B3PD	-	-	71	-	-	-	-	-	8.00	-	31.75	35.75	-	40	-
DK50-B25-03	-	-	71	-	-	-	-	-	5.00	-	25.40	27.90	-	40	-
DK50-B13F-03	-	-	71	-	-	-	-	-	-	-	-	-	21.80	40	13
DK50-B13F-1-03	-	-	71	-	-	-	-	-	-	-	-	-	22.20	40	13
DK50-B15F-03	-	-	71	-	-	-	-	-	-	-	-	-	25.20	40	15
DK50-B14F-1-03	-	-	71	-	-	-	-	-	-	-	-	-	29.85	40	14
DK50-B14F-2-03	-	-	71	-	-	-	-	-	-	-	-	-	30.00	40	14
DK50-B14F-3-03	-	-	71	-	-	-	-	-	-	-	-	-	31.70	40	14
DK50-B8F-03	-	-	71	-	-	-	-	-	-	-	-	-	36.10	40	8
DK50-B18F-03	-	-	71	-	-	-	-	-	-	-	-	-	39.70	40	18



KOD CODE	A	A1	C	D	G	Z
DK50-B02	102	86	62	55	5	40



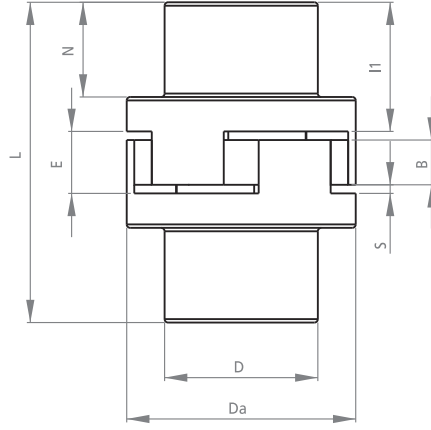
MOTOR MİLİNE GÖRE İŞLENMİŞ KAPLINLER  
PROCESSED COUPLINGS MOTOR SHAFT

KOD CODE	A	A1	C	C1	D	D1	E	E1	G	H	T	Z
DK50-B03	102	84	62	105	-	68	50	-	5	-	-	40
DK50-B1903	102	84	62	105	19	68	50	-	5	6	22	40
DK50-B2403	102	84	62	105	24	68	50	-	5	8	28	40
DK50-B2803	102	84	62	105	28	68	50	-	5	8	32	40
DK50-B3803	102	84	62	105	38	68	50	-	5	10	43	40
DK50-B4203	102	84	62	105	42	68	50	-	5	12	47	40
DK50-B4803	102	84	62	105	48	68	50	-	5	14	53	40
UDK50-B03	102	84	62	122	-	68	50	67	5	-	-	40
UDK50-B2803	102	84	62	122	28	68	50	67	5	8	32	40
UDK50-B3803	102	84	62	122	38	68	50	67	5	10	43	40
UDK50-B4203	102	84	62	122	42	68	50	67	5	12	47	40
UDK50-B4803	102	84	62	122	48	68	50	67	5	14	53	40

Motor Mil Çapları için  
sayfa 26'ya bakınız.  
Look at the paper 26 for  
Motor Shaft Diameters.

## YILDIZ KAPLİN

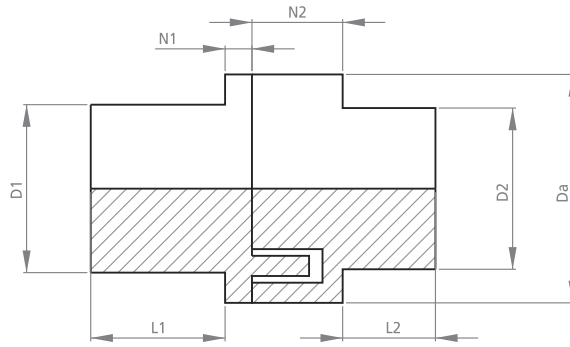
## STAR COUPLING



KOD CODE	Da	D	E	S	B	L	N	I1
YK 65	65	42	16	0.5	15	105	27	37
YK 80	80	54	23	3	20	130	31	45
YK 95	95	65	22	1	20	140	35	47
YK 110	110	77	26	0.5	25	160	40	56
YK 125	125	81	32	0.5	31	180	45	58
YK 140	140	88	34	1	32	196	50	68
YK 160	160	104	40	0.5	40	175	50	65
YK 180	180	108	46	0.5	45	230	54	70
YK 200	200	123	48	1.5	45	250	58	75
YK 225	225	133	48	1.5	45	260	62	80
YK 250	250	148	48	1.5	45	270	64	84

## AYAKLI KAPLİN

## "H" TYPE COUPLING



KOD CODE	Da	D1	L1	N1	D2	L2	N2
AK 68	68	50	40	9	48	17	27
AK 80	80	53	46	12	52	22	26
AK 95	95	64	48	12	63	26	33
AK 110	110	75	46	12	76	30	33
AK 125	125	84	54	13	88	30	32
AK 140	140	97	54	13	97	42	33
AK 160	160	104	56	14.5	114	34	40
AK 180	180	112	65	17.5	129	34.5	47
AK 200	200	130	65	18	132	35	51
AK 225	225	135	73	21	151	44	55
AK 250	250	152	76	27	170	43	63
AK 280	282	158	81	50	186	70	68
AK 315	315	170	85	50	190	80	70

## MOTOR MİL ÇAPLARI

## MOTOR SHAFT DIAMETERS

DEVİR SPEED	KW	HP	MİL ÇAPI (mm) SHAFT DIA	KAMA (mm) KEY HOLE	FLANŞ ÇAPI (mm) FLANGE DIA
1500	0.09	0.12	9	3	140
1500	0.12	0.16	11	4	140
1500	0.18	0.25	11	4	140
1500	0.25	0.33	14	5	160
1500	0.37	0.5	14	5	160
1500	0.55	0.75	19	6	200
1500	0.75	1	19	6	200
1500	1.1	1.5	24	8	200
1500	1.6	2	24	8	200
1500	2.2	3	28	8	250
1500	3	4	28	8	250
1500	4	5.5	28	8	250
1500	5.5	7.5	38	10	300
1500	7.5	10	38	10	300
1500	11	15	42	12	350
1500	15	20	42	12	350
1500	18.5	25	48	14	350
1500	22	30	48	14	350
1500	30	40	55	16	400
1500	37	50	60	18	450
1500	45	60	60	18	450
1500	55	75	65	18	550
1500	110	150	85	22	660
3000	0.09	0.12	9	3	140
3000	0.12	0.16	11	4	140
3000	0.18	0.25	11	4	140
3000	0.25	0.33	11	4	160
3000	0.37	0.5	14	5	160
3000	0.55	0.75	14	5	200
3000	0.75	1	19	6	200
3000	1.1	1.5	19	6	200
3000	1.6	2	24	8	200
3000	2.2	3	24	8	250
3000	3	4	28	8	250
3000	4	5.5	28	8	250
3000	5.5	7.5	38	10	300
3000	7.5	10	38	10	300
3000	11	15	42	12	350
3000	15	20	42	12	350
3000	18.5	25	42	12	350
3000	22	30	48	14	350
3000	30	40	55	16	400
3000	37	50	55	16	450
3000	45	60	60	18	450
3000	55	75	65	18	550
3000	110	150	85	22	660
1000	0.09	0.12	9	3	140
1000	0.12	0.16	14	5	140
1000	0.18	0.25	14	5	140
1000	0.25	0.33	19	6	160
1000	0.37	0.5	19	6	160
1000	0.55	0.75	19	6	200
1000	0.75	1	24	8	200
1000	1.1	1.5	24	8	200
1000	1.6	2	28	8	200
1000	2.2	3	28	8	250
1000	3	4	38	10	250
1000	4	5.5	38	10	250
1000	5.5	7.5	38	10	300
1000	7.5	10	42	12	300
1000	11	15	42	12	350
1000	15	20	48	14	350
1000	18.5	25	55	16	350
1000	22	30	55	16	350
1000	30	40	60	18	400
1000	37	50	55	16	450
1000	45	60	60	18	450
1000	55	75	65	18	550
1000	75	102	85	22	660